

Effectiveness of transmural team-based palliative care in prevention of hospitalizations in patients at the end of life

a systematic review and meta-analysis

Author(s)

Flierman, Isabelle; Gieteling, Elske; Van Rijn, Marjon; Van Grootven, Bastiaan; van Doorne, Iris; Jamaludin, Faridi S.; Willems, Dick L.; Muller, Majon; Buurman, Bianca M

DOI

[10.1177/02692163221135616](https://doi.org/10.1177/02692163221135616)

Publication date

2023

Document Version

Final published version

Published in

Palliative Medicine

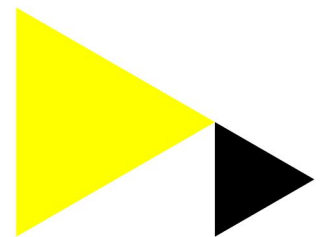
License

CC BY

[Link to publication](#)

Citation for published version (APA):

Flierman, I., Gieteling, E., Van Rijn, M., Van Grootven, B., van Doorne, I., Jamaludin, F. S., Willems, D. L., Muller, M., & Buurman, B. M. (2023). Effectiveness of transmural team-based palliative care in prevention of hospitalizations in patients at the end of life: a systematic review and meta-analysis. *Palliative Medicine*, 37(1), 75-87. <https://doi.org/10.1177/02692163221135616>



General rights

It is not permitted to download or to forward/distribute the text or part of it without the consent of the author(s) and/or copyright holder(s), other than for strictly personal, individual use, unless the work is under an open content license (like Creative Commons).

Disclaimer/Complaints regulations

If you believe that digital publication of certain material infringes any of your rights or (privacy) interests, please let the Library know, stating your reasons. In case of a legitimate complaint, the Library will make the material inaccessible and/or remove it from the website. Please contact the library: <https://www.amsterdamuas.com/library/contact/questions>, or send a letter to: University Library (Library of the University of Amsterdam and Amsterdam University of Applied Sciences), Secretariat, Singel 425, 1012 WP Amsterdam, The Netherlands. You will be contacted as soon as possible.


Effectiveness of transmurial team-based palliative care in prevention of hospitalizations in patients at the end of life: A systematic review and meta-analysis

Palliative Medicine
2023, Vol. 37(1) 75–87
© The Author(s) 2022



Article reuse guidelines:
sagepub.com/journals-permissions
DOI: 10.1177/02692163221135616
journals.sagepub.com/home/pmj



Isabelle Flierman^{1,2,3}, Elske Gieteling^{3,4,5}, Marjon Van Rijn^{1,3,6}, Bastiaan Van Grootven⁷, Iris van Doorne^{1,3} , Faridi S Jamaludin⁸, Dick L Willems², Majon Muller⁴ and Bianca M Buurman^{1,3,4}

Abstract

Background: Team-based palliative care interventions have shown positive results for patients at the end of life in both hospital and community settings. However, evidence on the effectiveness of transmurial, that is, spanning hospital and home, team-based palliative care collaborations is limited.

Aim: To systematically review whether transmurial team-based palliative care interventions can prevent hospital admissions and increase death at home.

Design: Systematic review and meta-analysis.

Data sources: MEDLINE (Ovid), Embase (Ovid), CINAHL (Ebsco), PsychINFO (Ovid), and Cochrane Library (Wiley) were systematically searched until January 2021. Studies incorporating teams in which hospital and community professionals co-managed patients, hospital-based teams with community follow-up, and case-management interventions led by palliative care teams were included. Data was extracted by two researchers independently.

Results: About 19 studies were included involving 6614 patients, of whom 2202 received an intervention. The overall pooled odds ratio of at least one hospital (re)admissions was 0.46 (95% confidence interval (CI) 0.34–0.68) in favor of the intervention group. The highest reduction in admission was in the hospital-based teams with community follow-up: OR 0.21 (95% CI 0.07–0.66). The pooled effect on home deaths was 2.19 (95% CI 1.26–3.79), favoring the intervention, with also the highest in the hospital-based teams: OR 4.77 (95% CI 1.23–18.47). However, studies had high heterogeneity regarding intervention, study population, and follow-up time.

Conclusion: Transmurial team-based palliative care interventions, especially hospital-based teams that follow-up patients at home, show an overall effect on lowering hospital admissions and increasing the number of patients dying at home. However, broad clinical and statistical heterogeneity of included studies results in uncertainty about the effect size.

Keywords

Palliative care, hospice care, transmurial team-based palliative care, hospital-based teams, case-management, systematic review, meta-analysis, hospitalization, death at home

¹Amsterdam UMC Location AMC, University of Amsterdam, Department of Internal Medicine, Section of Geriatric Medicine, Amsterdam, The Netherlands

²Amsterdam UMC Location AMC, University of Amsterdam, Department of General Practice, Section of Medical Ethics, Amsterdam, The Netherlands

³Amsterdam Public Health, Aging & Later life, Amsterdam, The Netherlands

⁴Amsterdam UMC Location VUmc, Department of Medicine for Older People, Amsterdam, The Netherlands

⁵Amstelland Hospital, Department of Internal Medicine, Amstelveen, The Netherlands

⁶Center of Expertise Urban Vitality, Faculty of Health, Amsterdam University of Applied Science, Amsterdam, The Netherlands

⁷Research Foundation Flanders – FWO, Brussels, Belgium + KU Leuven, Department of Public Health and Primary Care, Leuven, Belgium

⁸Amsterdam UMC, University of Amsterdam, Research Support, Medical Library AMC, Meibergdreef 9, Amsterdam, The Netherlands

Corresponding author:

Isabelle Flierman, Amsterdam UMC, University of Amsterdam, Department of Internal Medicine, Section of Geriatric Medicine, Room D3-335, Meibergdreef 9, Amsterdam, North Holland 1105AZ, The Netherlands.

Email: i.flierman@amsterdamumc.nl

What is already known about the topic?

- Both home-based and hospital-based palliative care interventions reduce hospital readmissions and increase home deaths.

What this paper adds?

- Transmural team-based palliative care interventions can improve important outcomes for patients at the end of life.

Implications for practice, theory and policy:

- Hospital-based teams that follow patients at home seem to have the largest impact on patient outcomes.
- Since quality of the studies was low to moderate and heterogeneity was high, further research to draw stronger conclusions is needed.

Introduction

Palliative care is an approach to improving the quality of life for patients and their relatives facing life-threatening illness.¹ Palliative care traditionally focused on patients with an oncological diagnosis; however, the number of patients living with and dying from multiple chronic conditions is increasing, emphasizing the need for well-organized palliative care.² Although most patients at the end of life wish to be cared for and die at home, care transitions to the hospital, and consequently hospital deaths, are common in the last phase of life.^{3–6} Continuity of care, collaboration, and information sharing between care settings are important aspects of palliative care.^{7,8} However, collaboration between professionals from different care settings is suboptimal and can lead to negative patient outcomes.^{9,10}

The organization of palliative care is highly dependent on country and setting. Whereas in some countries, palliative care specialists provide most of the palliative care, in many European countries, generalists such as the general practitioner provide most of the palliative care, and specialists have a consulting function. Studies have shown interventions incorporating multidisciplinary care teams are the most effective in improving patient outcomes.¹¹ These multidisciplinary care teams function either within the hospital or in the community setting and do not follow patients while they move from one setting to another. For continuity of care, structured collaboration between home and hospital, information sharing, and providing care at the desired place are important. Transmural palliative teams are teams that provide continuous care for patients at the end of life while the patient moves between settings. Whereas research has found both home-based and hospital-based palliative care interventions reduce hospital readmissions and increase home deaths,^{12–14} evidence on the effectiveness of structured transmural team-based palliative care collaborations is limited. Hence, whether

transmural team-based collaborations in which patients are followed throughout care settings reduce hospital admissions and increase home deaths is unknown.

The aim of this study is thus to systematically review and summarize all evidence on effectiveness of transmural team-based collaborations between hospital and primary care professionals in palliative care on hospital admissions and home deaths. We include three models of care: (1) collaborative teams in which hospital and community-based professionals closely collaborate, (2) hospital-based teams that follow patients in the community setting, and (3) case management coordinated by a hospital-based team.

Methods

A systematic review was performed and results are presented in descriptive manner. For eligible studies a meta-analysis was performed with the aim to answer our research question: can transmural team-based collaborations decrease hospital admissions and increase home deaths. The updated Preferred Reporting Items for Systematic Reviews and Meta-Analyses (PRISMA) guidelines were followed.¹⁵ The study was not registered. The study protocol is available on request.

Inclusion criteria

We included interventions of team-based collaboration between primary and secondary care. We defined transmural team-based palliative care as teams that provide continuous care for patients at the end of life while the patient moves between settings. Teams had to provide at least face-to-face consultations at home or in the hospital. We defined three organizational models for the teams:

1. Collaborative teams: These teams involve structural collaboration between professionals from both the hospital and community. They follow patients

transitioning between care settings. They can provide medical care and symptom control at home.

2. Hospital-based teams: These teams provide care for patients in the hospital and community setting (through home visits), without structural collaboration with primary care professionals. These teams are mostly responsible for all care and can treat patients at home.
3. Case management: Case managers collaborate with hospital-based multidisciplinary teams. The main focus is on advance care planning and not on providing treatment at home.

We did not consider interventions to be transmural team based when teams were solely hospital based, for example, when they followed patients in the outpatient setting or were community/hospice based with referrals from the hospital but no further or unclear collaboration with the hospital.

We used the following additional inclusion criteria for studies:

- (1) Study participants, or i.e., patients, were 18 years or older.
- (2) Studies defined their participants as being in need of palliative care.
- (3) Studies used an independent control group: randomized controlled trials (RCTs), non-RCTs (e.g. before-and-after study, interrupted time series), and observational studies (e.g. cohort study and case-control study). Control groups were (historical) care as usual, which could either be palliative care provided in one setting, or no palliative care.
- (4) Studies used one of the following outcomes: (re)-hospitalizations and/or days of hospital admissions or home death and/or (preferred) place of death. These outcomes can be seen as synonyms for good symptom control by reducing the need for unplanned hospitalizations and reflect organization of care to fulfill a patient's wish to spend time and die at home.
- (5) Studies had to be in English or Dutch.

Search strategy

MEDLINE (Ovid), Embase (Ovid), CINAHL (Ebsco), PsychINFO (Ovid), and Cochrane Library (Wiley) were systematically searched from onset until January 2021. We drafted a customized search strategy with the help of a clinical librarian (FJ). To validate the search strategy, we formulated a reference set of articles through a scoping search (IF). The search contained the following key concepts: "palliative care," "transmural care," "hospitalization," and "place of death." The full search strategy is displayed in Supplement 1.

Study selection and quality assessment

All titles and abstracts were screened independently by two of four researchers (IF, EG, MP, and SB) for eligibility for full-text assessment. The researchers discussed discrepancies between selection, which occurred in 3.9% of the abstracts, until reaching consensus, and, if necessary, consulted a third researcher (BB). Covidence software was used throughout the screening process.¹⁶ References were screened for additional articles. IF and EG read the selected full text and assessed eligibility for data extraction independently. BB was consulted for the final selection of studies for this review.

The Cochrane risk-of-bias tool¹⁷ was used for quality assessment of RCTs and the Robins-I tool was used for non-RCTs. Because the blinding of transmural team-based palliative care interventions is essentially impossible, studies where participants and professionals were not blinded were not automatically assessed as high risk. Furthermore, the outcomes for hospitalization and place of death are unlikely to be influenced by a lack of blinding and will therefore be treated as "low risk-of-bias" even if blinding was unsuccessful.

Data extraction

Two researchers (IF and EG) independently used a standardized data-extraction form for data extraction. Data were collected on study characteristics (author, publication year, country, type of study), intervention characteristics (aim of study, description and components of intervention, recruitment place, comparator, team members), patient characteristics (mean age, gender, disease characteristics), and outcomes (hospitalization, place of death, preferred place of death).

Data analysis

Studies were synthesized in a descriptive summary. Odds ratios and 95% confidence intervals were constructed per study and for each outcome. If these data were not available from the main manuscript, authors were contacted to provide these data. We used the Mantel-Haenszel estimator to perform a random-effects meta-analysis with studies that reported event data on the outcomes for hospital admissions and/or home deaths. If studies reported different endpoints for hospital admissions, for example, admissions 1 month before death and 6 months before death, we included data from the longest timeframe. In the analysis of home deaths, we additionally used the Peto odds method because one of the studies had zero events. Pooled odds ratios were converted to absolute risk reduction and number needed to treat.

We used the chi-square test and I^2 statistic to assess the statistical heterogeneity. We defined several sources of clinical and methodological heterogeneity and used subgroup

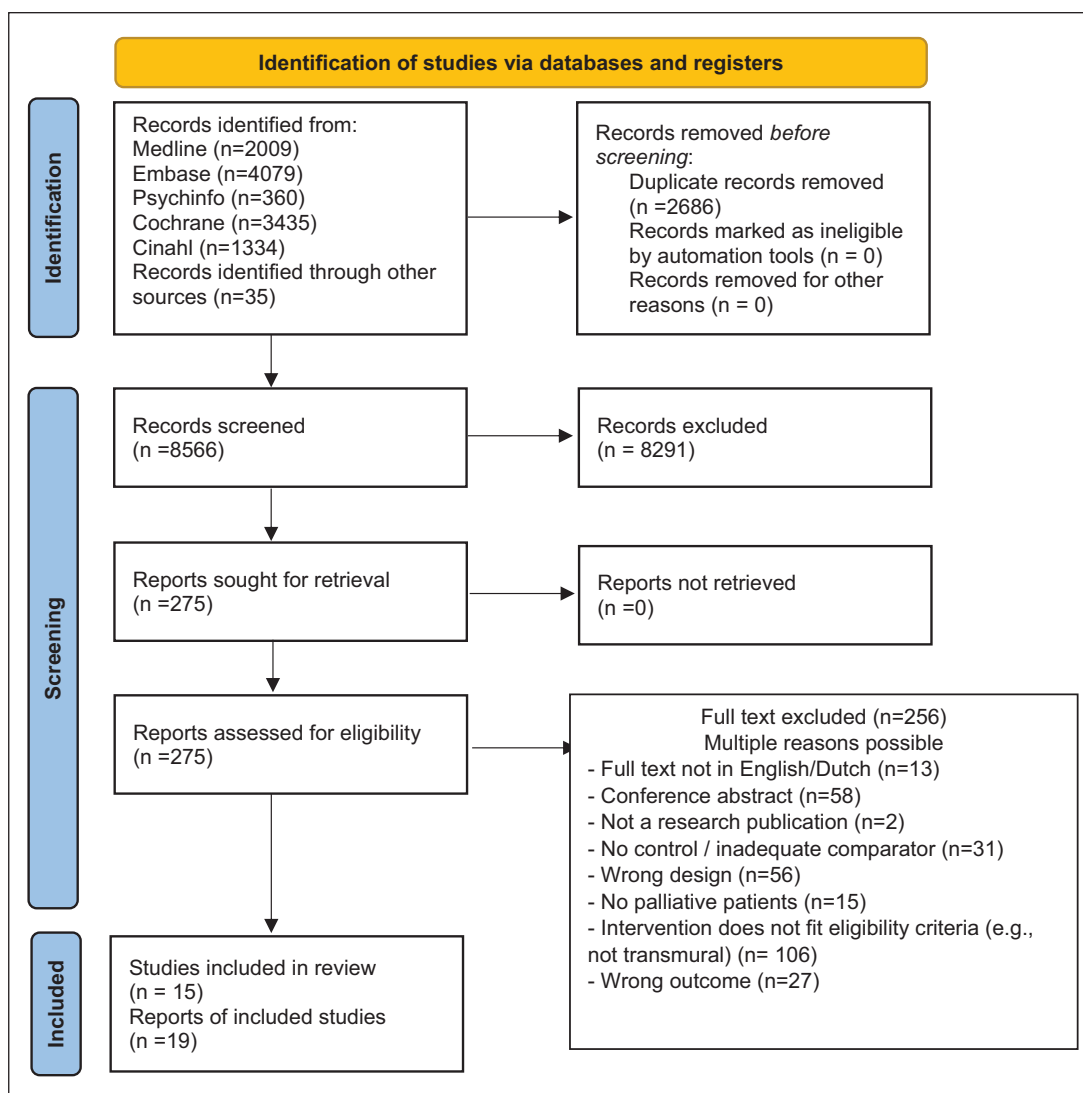


Figure 1. PRISMA 2020 flow diagram for new systematic reviews which included searches of databases and registers only.

analyses to explore their influence on the pooled effect estimates. First, we hypothesized that the effect would be different for the three types of interventions. Second, we investigated whether risk-of-bias influenced the effect estimates. We did not construct funnel plots, because the sample of included studies per outcome was less than 10.

Results

The database searches yielded 11,217 records, and manual searches identified an additional 35 records (Figure 1¹⁹). We screened 8566 abstracts for inclusion and exclusion criteria, after which we assessed 275 full texts for eligibility. Nineteen articles were included in this review. For two studies, three separate articles were published that looked at different outcomes, and these studies will be described as one study by Benthien et al.^{20–22} and by Rogers et al.^{23–25}

Description of studies

Table 1 and Supplement 2 summarizes the included studies and outcomes. Seven studies were RCTs^{20,21,23–30} or a cluster RCT,³¹ two were prospective non-randomized studies,^{32,33} one was a prospective quasi-experimental study,³⁴ four were retrospective before–after studies,^{35–38} and one was clustered, partially controlled before–after study.³⁹ Of these, three studies were pilot studies.^{29,33,35}

Overall, the studies included 6614 patients, 2202 of whom were in the intervention groups. Eight studies assessed collaborative teams with hospital and primary care professionals, though none of the interventions were exactly the same.^{21,27,29,34–36,38,39} The effect of hospital-based teams that followed patients in the community setting was assessed in four studies.^{26,32,33,37} In three studies, case management was the primary focus of intervention.^{24,29,30}

Table 1. Study characteristics. Collaborative team hospital and primary care.

Study	Aim of study	Study type	Population	Recruitment place	Control group	Follow-up time	Mortality	Outcomes hospital admissions and place of death (intervention vs control)
Brumley et al. ²⁵ USA	To determine whether an in-home palliative care intervention for terminally ill patients can improve patient satisfaction, reduce medical care costs, and increase the proportion of patients dying at home.	Randomized controlled trial (RCT)	<ul style="list-style-type: none"> N: 1: 155/C: 155 Diagnosis: heart failure (HF), COPD or Cancer Anticipated Prognosis: <1 year Age: 1: 74/C: 74 Gender (male): 1: 55%/C: 47% 	From community or hospital	Standard care to meet the needs of the patients; home health services, acute care services, primary care services, and hospice care	Until death or the end of the study period	I: 73% C: 73%	<ul style="list-style-type: none"> Lower number of patients with at least one hospital admission. 36% vs 59% ($p < 0.001$). Hospital days reduced by 4.36 ($p = 0.001$) determined by linear regression. Higher number of home deaths: 71% vs 51% ($p < 0.001$), OR to die at home 2.2.
Jordhøy et al. ²⁹ Norway	To evaluate if a palliative care intervention increased the rate of home deaths.	Cluster RCT	<ul style="list-style-type: none"> N: 1: 235/C: 199 Diagnosis: Cancer Anticipated Prognosis: 2–9 months Age: 1: 70 (38–90)/C: 69 (37–93) Gender (male): 1: 56%/C: 49% 	NM	Conventional care	2 years	I: 93% C: 88%	<ul style="list-style-type: none"> NSD in number of patients with at least one hospital admission (93% vs 94%). No reduction in length of stay (10.5 ± 7.3 vs 11.5 ± 8.9 days). Higher number of home deaths (25% vs 15% ($p = 0.02$)).
Groenewoud et al. ³⁷ Netherlands	To evaluate the effect of an integrated, proactive palliative care pathways covering the complete cycle of care.	A clustered, partially controlled before–after study	<ul style="list-style-type: none"> N: 1: 99/C: 71 Diagnosis: not specified Anticipated Prognosis: 12 months Age: 1: 74/C: NM Gender (male): 1: 44%/C: NM 	NM	Standard care	Until death or end of study (maximum 2 years)	I: 59%	<ul style="list-style-type: none"> Higher number of deaths nearly at home (including nursing home, home care, hospice, palliative unit) 97.3% vs 77.5% $p = 0.006$. NSD between Risk Ratio's between intervention and control for number of hospitalizations in last 6 months of life. Lower number of patient with at least one admission after start intervention (54% vs 76%)
Kalluri et al. ³³ Canada	Explorative analysis of a multidisciplinary collaborative care model with emphasis on community-based care.	Retrospective before–after study of diseased patients	<ul style="list-style-type: none"> N: 1: 22/C: 10 Diagnosis: idiopathic pulmonary fibrosis Anticipated Prognosis: NA Age: 1: 73/C: 66 Gender (male): 1: 64%/C: 60% 	During clinic visit	Non-multidisciplinary collaborative (MDC) care	mortality follow-back	100%	<ul style="list-style-type: none"> NSD in patients with respiratory-related hospital admission (50% vs 70%). Authors concluded clinical-relevant reduction in hospital admissions (IRR = 2.32; 95% CI: 0.95–5.6; $p = 0.064$), though not significant. Higher number of home deaths (55% vs 0%). Higher number of hospice death (23% vs 0%). 85% achieved preferred place of death in intervention group.
Lawson et al. ³⁴ Canada	To examine temporal trends in ED visits among palliative care services' patients and to examine the effects of the implementation of an integrated service model.	Retrospective before–after study of diseased patients	<ul style="list-style-type: none"> N: 1: 606/C: 2615 Diagnosis: not specified "palliative care service patients" Anticipated Prognosis: NM Age: 1: 71/C: 70 Gender (male): 1: 54%/C: 62% 	From palliative care services	A multidisciplinary team follows patients across care settings, including the home, an outpatient clinic, an inpatient palliative care unit, and throughout the QEII HSC hospital sites.	Mortality follow-back	100%	<ul style="list-style-type: none"> NSD for mean number of days in hospital (16.2 ± 33.8 vs 13.9 ± 24.4). NSD for home deaths (45.0% vs 43.6%).
Smeenk et al. ³² Netherlands	To investigate the effect of a transmural home care program on re-hospitalization, quality of life, and place of death.	Quasi-experimental intervention	<ul style="list-style-type: none"> N: 1: 79/C: 37 Diagnosis: Cancer Anticipated Prognosis: <6 months Age: 1: 65/C: 64 Gender (male): 1: 60%/C: 62% 	During hospital admission	Standard community care.	Until death	I: 100% -C: 100%	<ul style="list-style-type: none"> Lower number of days in the hospital (5.8 ± 12.8 vs 11.5 ± 17.1 ($p < 0.01$)). NSD for home death (81% vs 65% ($p = 0.06$)).

(Continued)

Table 1. (Continued)

Study	Aim of study	Study type	Population	Recruitment place	Control group	Follow-up time	Mortality	Outcomes hospital admissions and place of death (intervention vs control)
Benthien et al. ^{19/} Nordly et al. ^{18/} Benthien et al. ²⁰ Denmark	To investigate if a systematic fast-track transition from oncological treatment to specialized palliative care at home could result in more time spent at home and death at home.	RCT	<ul style="list-style-type: none"> N: I: 170/C: 170 Diagnosis: Cancer "end stage" Anticipated Prognosis: NM Age: I: 66/C: 65 Gender (male): I: 49%/C: 49% 	Inpatient and outpatient clinics	Standard cancer care plus on-demand specialized palliative care. Standard care includes in- and out-hospital treatment, access to a general practitioner, general practitioner out-of-hours service, psychological counseling, and access to 24 hours nursing home care.	6 and 30* months after last inclusion	I: 41% C: 37% after 6 months I: 96% C: 94% After 30 months	<ul style="list-style-type: none"> NSD in mean number of hospital admissions (2.14 SD 2.22 vs 2.02 SD2.05 ($p = 0.63$)) NSD in number of days in hospital (14.33 SD 16.55 vs 15.84 SD 19.31 ($p = 0.58$)). NSD in-home deaths (22.7% vs 17.6% ($p = 0.46$)) after 6 months. NSD in-home deaths (23.0% vs 25.0% ($p = 0.69$)) after 30 months.
Tan et al. ³⁶ Singapore	To evaluate the impact of the integrated hospice home care program on acute-care service usage and on the share of home deaths.	retrospective before-after study of deceased patients	<ul style="list-style-type: none"> N: I: 321/C: 593 Diagnosis: Cancer Anticipated Prognosis: <1 year Age: I: 71/C: 69 Gender (male): I: 58%/C: 59% 	During hospital admission	Patients discharged to home hospice services.	Mortality follow-back	100%	<ul style="list-style-type: none"> Lower number of hospital admissions at 1 month (98.9% vs 72.0% ($p < 0.001$)), 3 months (74.1% vs 90.6% ($p < 0.001$)), and 6 months before death (88.5% vs 95.6% ($p < 0.001$)). Higher number of home deaths (59.6% vs 40.0% ($p < 0.001$)).
Hospital-based team that follows patient at home								
Study	Aim of study	Study type	Population	Recruitment place	Comparator	Follow-up time	Mortality	Outcomes hospital admissions and place of death (intervention vs control)
Ahner-Elmqvist et al. ³⁰ Sweden	To compare outcomes for patients receiving either hospital-based advanced home care, including 24-hour service by a multidisciplinary palliative care team or conventional hospital care.	prospective non-randomized study	<ul style="list-style-type: none"> N: I: 119/C: 178 Diagnosis: Cancer Anticipated Prognosis: 2–12 months Age: I: 67/C: 68 • Gender (male): I: 52%/C: 46% 	During hospital admission	Conventional hospital and terminal care	at least 1.5 years	I: 98% C: 92%	<ul style="list-style-type: none"> Reduced overall time spent in hospital 18% vs 31% ($p < 0.005$)). Number of patients with at least one hospital admission (79% vs 99%). Higher number of home deaths 45% vs 10% ($p < 0.001$).
Brännström and Boman ²⁴ Sweden	To evaluate the effects of an integrated Palliative advanced home care and heart failure (PREFER) intervention.	RCT	<ul style="list-style-type: none"> N: I: 36/C: 36 Diagnosis: HF Anticipated Prognosis: <1 year Age: I: 82/C: 77 Gender (male): I: 72%/C: 69% 	From department of Medicine-Geriatrics or primary healthcare center	Usual care was provided by general practitioners or doctors and/or the nurse-led heart failure clinic at the Medicine-Geriatrics department	6 months	17% in total, NSD between groups.	<ul style="list-style-type: none"> Lower mean number of hospitalizations (0.42 ± 0.60 vs 1.47 ± 1.81, ($p = 0.009$)). Lower number of total hospital admissions (15 vs 53) Lower number of patients with at least one hospital admission (36.1% vs 58.3%) Lower mean number of hospital days 2.9 ± 8.3 days vs 8.5 ± 12.4 ($p = 0.011$) Higher number of home deaths: 46% vs 26% ($p = 0.036$). No significant higher odds for death at preferred place: OR 1.17, 95% CI: 0.38; 3.54, ($p = 0.79$).
Cross et al. ³¹ Australia	To document the effect of an innovative community palliative care program on home death rate, hospital death rate and achieving preferred place of death.	Prospective, comparative cohort study	<ul style="list-style-type: none"> N: I: 130/C: 120 Diagnosis: not specified Anticipated Prognosis: <6 months Age: I: 75/C: 72 Gender (male): I: 45%/C: 47% 	Referred and admitted to community specialist palliative care service	Standard level of care	Until death or discharge from palliative care program	I: 59% C: 58% (1 year)	<ul style="list-style-type: none"> Higher number of home deaths: 46% vs 26% ($p = 0.036$). No significant higher odds for death at preferred place: OR 1.17, 95% CI: 0.38; 3.54, ($p = 0.79$).

(Continued)

Table 1. (Continued)

Hospital-based team that follows patient at home

Study	Aim of study	Study type	Population	Recruitment place	Comparator	Follow-up time	Mortality	Outcomes hospital admissions and place of death (intervention vs control)
Pace et al. ³⁵ Italy	Assess the role of palliative home-care services and impact on quality of care and cost-effectiveness	Retrospective pilot study	<ul style="list-style-type: none"> N: i: 72/C:72 (subgroup of overall study) Diagnosis: Brain tumor Glioblastoma (GBM) Anticipated Prognosis: NM Age: i: 62/C: 65 Gender (male): i: 58%/C: 55% 	During hospital admission for surgical intervention	GBM patients from different neurosurgical ward without palliative home-care	NM	In total 98% (NSD survival time between groups)	<ul style="list-style-type: none"> Reduced hospitalization in last month of life 8.3% vs 26.8% (Poisson regression age- and sex-adjusted Incidence Rate Ratio (IRR) 0.20 (95% CI: 0.12–0.74, $p = 0.009$)) and in last 2 months of life 16.7% vs 38.0% (IRR 0.35 (95% CI 0.18–0.65) $p = 0.001$). Lower mean hospitalization duration month before death: 0.8 days (95% CI 0.6–1.0) vs 2.5 days (95% CI 2.1–2.9)
Case management coordinated by (hospital based) team/palliative care specialist(s)								
Study	Aim of study	Study type	Population	Recruitment place	Comparator	Follow-up time	Mortality	Outcomes hospital admissions and place of death (intervention vs control)
Radwany et al. ²⁷ USA	To describe the feasibility and present the outcomes of the PEACE pilot study	Randomized pilot study	<ul style="list-style-type: none"> N: i: 40/C: 40 Diagnosis: End stage chronic disease (organ failure, cancer, neurological disease) >60 years Anticipated Prognosis: NM Age: i: 70/C: 69 Gender (male): i: 25%/C: 22% 	Community-based long term care	Usual PASSPORT care, which follows more of a psychosocial rather than a biopsychosocial model. Consumers also received mailed palliative care educational information every month in an attempt to mask group assignment	12 months	18% in both groups	<ul style="list-style-type: none"> NSD in hospital admission 50% vs 55%, $p = 0.65$
Rogers et al. ²² /Mentz et al. ²¹ /Warrach et al. ²³ USA	To investigate whether an interdisciplinary palliative care intervention in addition to evidence-based heart failure care improves outcomes	RCT	<ul style="list-style-type: none"> N: i: 75/C: 75 Diagnosis: HF Anticipated Prognosis: >50% predicted 6 months mortality Age: i: 72/C: 70 Gender (male): i: 66%/C: 49% 	During or shortly after hospital admission	Patients managed by a cardiologist-directed team with heart failure expertise.	Intervention 6 months, followed for 24 months.	<ul style="list-style-type: none"> i: 31%, C: 27% (at 6 months) 	<ul style="list-style-type: none"> NSD for all-cause readmission 47% vs 51%, $p > 0.05$ NSD for hospital admission for heart failure (30.7% vs 29.3%), non-heart failure cardiovascular (10.7% vs 24.0%). NSD between death at home or inpatient hospice 55% vs 45%, or hospital or killed nursing home death 41% vs 59% $p = 0.30$ Reduction in hospital admissions 34% vs 61% ($p = 0.009$). Lower mean number of hospital admission group (0.42 ± 0.10 vs 1.10 ± 0.16 ($p = 0.001$)).
Wong et al. ²⁸ Hong Kong	To examine the effect of home-based transitional palliative care for patients with end-stage HF after hospital discharge.	RCT	<ul style="list-style-type: none"> N: i: 43/C: 41 Diagnosis: HF Anticipated Prognosis: <1 year Age: i: 78/C: 78 Gender (male): 44%/C: 61% 	During hospital admission	Both groups received usual care, which consisted of PC medical clinic consultation, discharge advice on symptom management and medication and referrals if appropriate (home visits).	12 weeks	<ul style="list-style-type: none"> i: 14%, C: 24% 	

i: intervention; C: control; RCT: randomised controlled trial; HF: heart failure; COPD: chronic obstructive pulmonary disease; ED: Emergency Department; PC: palliative care; GBM: glioblastoma multiforma; NSD: no significant difference; NM: not mentioned; NA: not applicable; CI: confidence interval.

In four studies, the intervention was compared with non-transmural palliative care,^{30,35,36,38} whereas in the other studies, the usual care did not include palliative care, although in some cases, usual-care patients did receive hospice or terminal care on demand.

For eight studies, hospital admissions were (one of) the primary outcomes,^{27,28–32,34,35,37,38} whereas it was a secondary outcome for four studies. Cross et al.³³ solely looked at place of death.

Risk assessment

Table 2 shows the risk-of-bias scores. Out of the seven RCTs, none received a low risk for all five bias points. All studies either received some concern or high risk-of-bias score due to deviations from intended interventions, because information on adherence to the intervention was missing. Jordhøy et al.³¹ received a high risk-of-bias score on the randomization process because it was a cluster RCT.

For the non-RCTs, all studies received at least moderate risk in the confounding section. Also, moderate to serious risk-of-bias was found due to deviations from intended interventions or insufficient information to fully judge this section.

Meta-analysis

Twelve studies were included in the analysis on hospital admission (see Figure 2). Overall, the odds of hospital admission was significantly reduced. The pooled odds ratio was 0.48 (95% CI 0.34–0.68). The overall absolute risk difference was –0.13 (95% CI –0.16, –0.10), and equals a number needed to treat of 7.55 (95% CI 6.11–9.87). However, considerable heterogeneity exists ($I^2 = 60\%$), and relevant subgroup differences were detected. Interventions with collaborative teams and hospital-based teams resulted in fewer hospital admissions, but this effect was not observed in case-management interventions. For collaborative teams, the absolute risk difference was –0.10 (95% CI –0.13 to 0.07) with a NNT of 10.13 (95% CI 7.57–15.31). For the hospital-based teams the absolute risk difference was –0.26 (95% CI –0.34, –0.18), with a NNT of 3.86 (95% CI 2.94–5.61). However, the residual heterogeneity for outcome was high within the three subgroups (I^2 31%–74%), suggesting the differences in outcomes cannot be fully explained by the differences in intervention. For the sensitivity analysis for risk-of-bias, we selected studies that received a moderate risk-of-bias score on no more than two domains as the “higher”-quality studies, because none of the studies received a low risk-of-bias on all domains. These analyses could not be performed for the subgroups, due to the low number of studies. Looking at the pooled effect, the decreased odds for hospital admission remained (OR 0.52, 95% CI 0.33–0.81) (Supplement 3).

Nine studies reported the percentage of patients with home deaths (Figure 3). We excluded one study from the random-effects modeling, because in the control group, zero events occurred.³⁵ The pooled effect indicate more home deaths (OR 2.19, 95% CI 1.26–3.79) with an absolute risk difference of 0.07 (95% CI 0.04–0.10) and an NNT of 14.7 (95% CI 10.4–25.3). The effect was larger in hospital-based teams (OR 4.77, 95% CI 1.23–18.47) than in collaborative teams (OR 1.73, 95% CI 0.98–3.04). However, the residual heterogeneity for outcome was very high within the two subgroups (I^2 86%–92%).

We found similar effects toward more home deaths in the sensitivity analysis with Peto odds, including the study with zero events (OR 1.57 95% CI 1.38–1.78), as well as within the sensitivity analysis for risk-of-bias (OR 1.63, 95% CI 0.81–3.31); see Supplement 3.

Additional outcomes

Two studies provided the mean number of admissions days. Lawson et al.³⁶ found no significant differences between intervention and control (16.2 ± 33.8 vs 13.9 ± 24.4). Smeenk et al.³⁴ did find a lower mean number of admissions days in the intervention group (5.8 ± 12.8 vs 11.5 ± 17.1 ($p < 0.01$)).

In two studies, the percentage of home deaths was combined with inpatient hospice deaths. Whereas Groenewoud et al.³⁹ found a significantly higher number of patients dying at home/hospice, Warraich et al.²⁵ did not find a significant difference. Two studies mentioned the preferred place of death: Kalluri et al.³⁵ reported that 85% of patients in the intervention group died at their preferred place of death; however, no number for the control group was mentioned. Cross et al.³³ found no increase in death at place of preference (odds ratio 1.17, 95% CI: 0.38, 3.54, ($p = 0.79$)).

Discussion

This systematic review and meta-analysis assessed the effect of transmural team-based collaborations between hospital and primary care professionals on hospital admissions and home deaths. We included 19 studies that incorporated collaborative teams, hospital-based teams, or case management. Meta-analysis demonstrated overall a lower number of patients with hospital admissions, and more home deaths. However, observing a precise effect estimate was impossible because of the heterogeneity. Subgroup analysis only partially explained the between-study variance but indicated hospital-based teams were the most effective. Furthermore, not all studies were of high quality; however, when we only included higher-quality studies, the overall reduction in hospital admissions and increase in home deaths remained.

Table 2. Risk of bias.

Cochrane risk of bias	Bias arising from the randomization process	Bias due to deviations from intended interventions	Bias due to missing outcome data	Bias in measurement of the outcome	Bias in selection of the reported result	
Brannström and Boman ²⁴	Low	Moderate	Low	Low	Low	
Brumley et al. ²⁵	Low	Moderate	Low	Low	Low	
Jordhøy et al. ²⁹	Serious	Moderate	Low	Low	Low	
Radwany et al. ²⁷	Moderate	Serious	Moderate	Moderate	Moderate	
Rogers et al. ²² /Mentz et al. ²¹ /Warraich et al. ²³	Moderate	Moderate	Moderate	Low	Low	
Benthien et al. ¹⁹ /Nordly et al. ¹⁸ /Benthien et al. ²⁰	Low	Moderate	Low	Low	Low	
Wong et al. ²⁸	Low	Serious	Low	Low	Low	
Robins tool	Bias due to confounding	Bias in selection of participants into study	Bias in classification of interventions	Bias due to deviations from intended interventions	Bias due to missing measurements of outcomes	Bias in selection of the reported results
Ahner-Elmqvist et al. ³⁰	Serious	Low	Low	NI/low*	Low	Low
Cross et al. ³¹	Serious	Low	Low	Serious	Low	Low
Groenewoud et al. ³⁷	Serious	Low	Low	NI	Serious	Low
Kalluri et al. ³³	Moderate	Moderate	Low	NI/low	Low	Low
Lawson et al. ³⁴	Moderate	Moderate	Low	NI	Low	Low
Pace et al. ³⁵	Serious	Low	Low	NI/low	Low	Low
Smeenk et al. ³²	Moderate	Low	Low	Moderate	Low	Low
Tan et al. ³⁶	Moderate	Serious	Low	NI	Low	Low

NI: no information.

*In studies with NI/low risk, the information that was available suggested low risk.

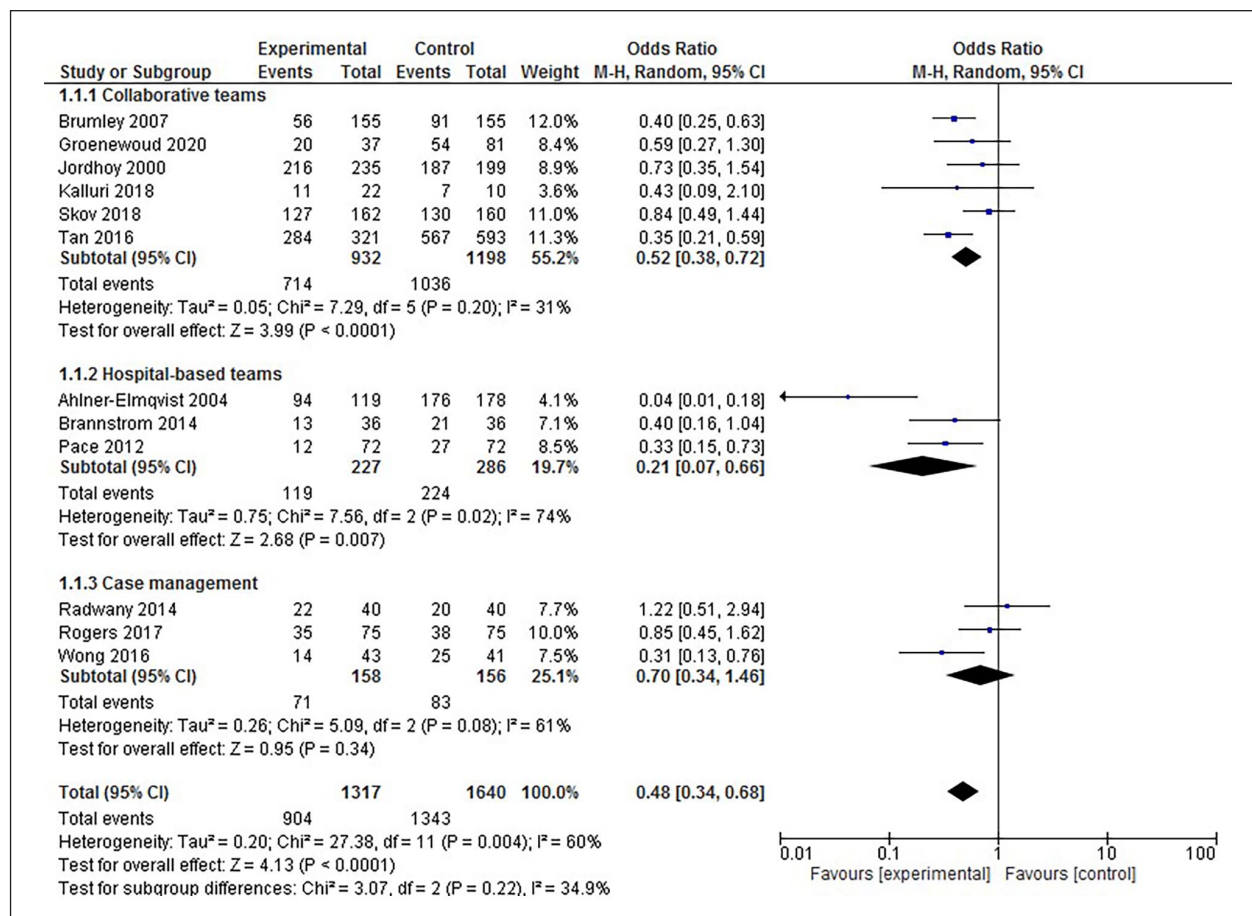


Figure 2. Meta-analysis on hospital admission forest plot.

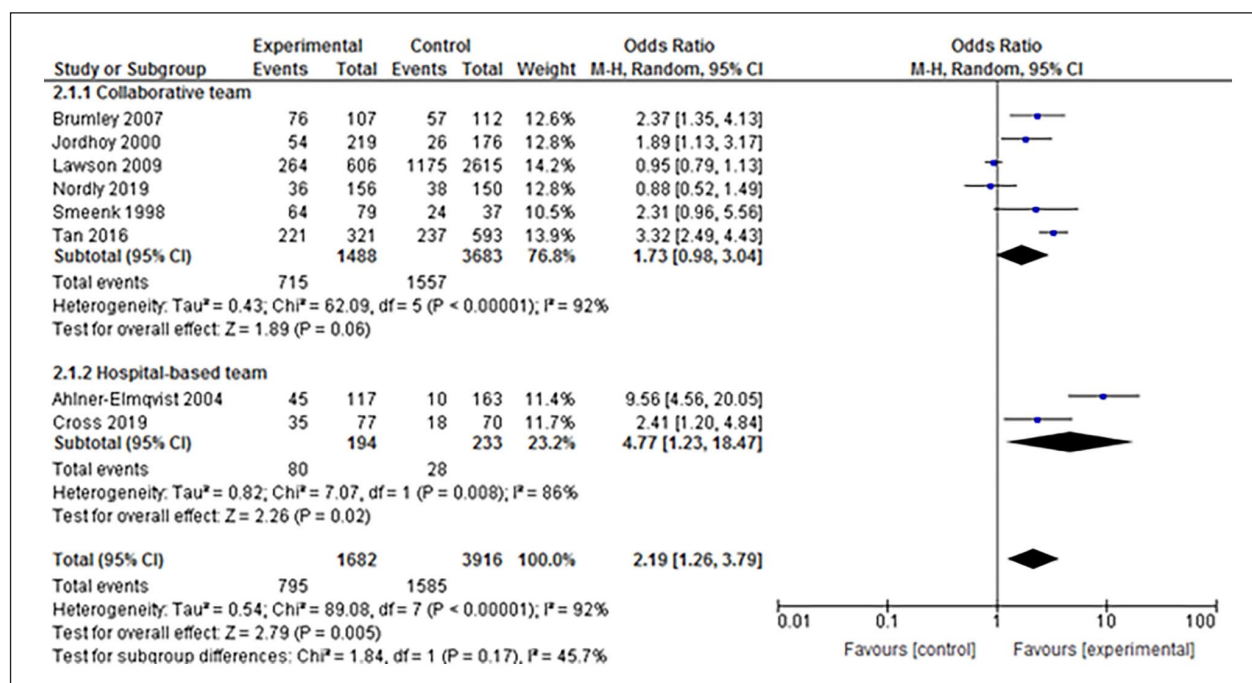


Figure 3. Meta-analysis on home death forest plot.

Comparison with literature

Previous reviews have focussed on palliative care interventions in either the hospital setting or home care settings, with some positive results in reducing hospital admissions and increasing the rate of home deaths.^{13,14} Our review is novel in that it specifically focused on studies that span both the hospital and home setting. Overall, hospital-based teams that follow patients at home seem to have the largest effect on reducing hospital admissions and increasing the rate of home deaths, whereas case-management interventions showed limited effects. One explanation could be that in the included studies, the hospital-based teams were often fully in charge of the patient, and thus, continuity of care was achieved. However, earlier in the disease trajectory it might be more appropriate to provide palliative care alongside regular care. Additionally some patients might wish to continue seeing their general practitioner in addition to palliative care specialists. In these cases, collaborative teams in which palliative care specialists and generalists work together might be more desirable. This preference is also in line with the generalist-plus-specialist care model first described by Quill and Abernethy,⁴⁰ and fits well with the early palliative care model whereby palliative care is provided alongside disease-modifying treatment. Another explanation for the large effect of the hospital-based intervention could be that care as usual was non-palliative care in these interventions, whereas in the collaborative-team interventions, the usual care of the control group often already contained palliative care components.

Within the subgroup of case-management studies, the studies with longer follow-up showed no differences in readmissions, whereas the study by Wong et al.³⁰ did find positive effects of the intervention during the 12-week follow-up. Case management alone, even if in collaboration by a palliative team, might not be sufficient in the last months of life, when needs increase and more hands-on medical care is needed at home, to prevent hospital admissions. Furthermore, two of the case-management studies included patients with heart failure, and although the studies inclusion criteria stated end-stage heart failure, mortality rates were low, which could result from the difficulty in assessing prognosis in organ failure.⁴¹ Case management's limited effect on the reduction in hospital admissions in palliative settings is disappointing, especially compared with non-palliative settings.⁴²

Our meta-analysis also showed, on average, more home deaths in the intervention groups. The more intensive collaboration with primary care and the provision of medical and nursing care at home could have resulted in both patients and care professionals feeling confident that a "comfortable" death could be achieved at home. Furthermore, in many studies, advance care

planning was part of the intervention, and open discussions about the preference to die at home could have increased home deaths.^{43,44} By choosing home deaths as an outcome, we did not incorporate patients who died in hospice, which is the second-most reported preferred place of death.⁴⁵ Preferably, the outcome measured would have been the preferred place of death; however, this outcome was only reported in two studies.^{33,35} This finding is not surprising, because the preferred place of death is often not known for all patients and is subject to change over time.⁴⁶ In the study with the largest effect on home deaths, patients in the intervention group explicitly chose home care, whereas the control group did not, and the incentive to continue care at home until death might therefore be high compared with other studies.³²

Limitations

The heterogeneity of the included studies was high, which is an important shortcoming in many reviews on palliative care. We aimed to improve the comparability of the effects in the included studies by using two outcome measures that were available for all patients, instead of more frequently used outcomes, such as quality of life, that can be measured with a wide variety of scales. Nonetheless, the interpretation of our findings, and especially the meta-analysis, should be considered within these limitations. In addition the small number of studies included within the analysis of the hospital-based teams and case-management intervention makes it difficult to draw meaningful conclusions. Furthermore, the quality of the included studies varied as well. Most studies were of moderate quality or showed at least some potential bias. Interestingly, although all interventions studied could be described as complex interventions,⁴⁷ almost none of the studies included adherence to protocol or reported on it in a separate study.⁴⁸ Jordhøy et al.³¹ did describe failing implementations as important limitations in their study. Failures in implementation are not necessarily limitations if clearly reported. Understanding why implementation failed and how such failure could have affected the results is important so others can learn how to improve future studies and care programs.

Conclusion

This review and meta-analysis of transmural team-based collaborations between hospital and primary care professionals in palliative care showed the interventions lowered hospital admissions and increased the number of patients dying at home. Hospital-based teams that follow patients at home seem to have the largest impact on these outcomes; however, the heterogeneity of the included studies limited strong overall conclusions.

Availability of data

Protocol, template data collection forms, data extracted from included studies, data used for analyses, analytic code available from the corresponding author on reasonable request.

Authorship

The study was designed by IF, MvR, MM, and BB. Search strategy was designed by FJ. Titles and abstracts were screened by IF, EG, MP, and SB. Selection of studies was done by IF and EG and discussed with MvR, BB. Selection of studies after a search update was done by IF and IvD. Quality assessment and data analysis of included studies was done by IF, EG, and IvD. Statistical analysis was done by IF, EG, and BvG. IF, EG, and MvR wrote the first draft of the manuscript, which was critically reviewed by all authors. All authors approved this version to be submitted.

Declaration of conflicting interests

The author(s) declared no potential conflicts of interest with respect to the research, authorship, and/or publication of this article.

Funding

The author(s) disclosed receipt of the following financial support for the research, authorship, and/or publication of this article: This work was supported by ZonMw (The Netherlands Organization for Health Research and Development), grant number 844001103. This study was a sub study of a larger research project.

ORCID iD

Iris Van Doorne  <https://orcid.org/0000-0001-5880-419X>

Supplemental material

Supplemental material for this article is available online.

References

- World Health Organization (WHO). WHO definition of palliative care, <https://www.who.int/cancer/palliative/definition/en/> (2020, accessed 30 April 2020).
- Etkind SN, Bone AE, Gomes B, et al. How many people will need palliative care in 2040? Past trends, future projections and implications for services. *BMC Med* 2017; 15(1): 102.
- Davies JM, Sleeman KE, Leniz J, et al. Socioeconomic position and use of healthcare in the last year of life: a systematic review and meta-analysis. *PLoS Med* 2019; 16(4): e1002782.
- Singh GK, Davidson PM, Macdonald PS, et al. The use of hospital-based services by heart failure patients in the last year of life: a discussion paper. *Heart Fail Rev* 2019; 24(2): 199–207.
- Pivodic L, Pardon K, Morin L, et al. Place of death in the population dying from diseases indicative of palliative care need: a cross-national population-level study in 14 countries. *J Epidemiol Community Health* 2016; 70(1): 17–24.
- Broad JB, Gott M, Kim H, et al. Where do people die? An international comparison of the percentage of deaths occurring in hospital and residential aged care settings in 45 populations, using published and available statistics. *Int J Public Health* 2013; 58(2): 257–267.
- Amador S, Sampson EL, Goodman C, et al. A systematic review and critical appraisal of quality indicators to assess optimal palliative care for older people with dementia. *Palliat Med* 2019; 33(4): 415–429.
- Raijmakers NJ, de Veer AJ, Zwaan R, et al. Which patients die in their preferred place? A secondary analysis of questionnaire data from bereaved relatives. *Palliat Med* 2018; 32(2): 347–356.
- Hauser JM. Lost in transition: the ethics of the palliative care handoff. *J Pain Symptom Manag* 2009; 37(5): 930–933.
- Otte IC, Jung C, Bally K, et al. Interprofessional Silence at the end of life: do Swiss General Practitioners and hospital physicians sufficiently share information about their patients? *J Palliat Med* 2016; 19(9): 983–986.
- Hui D, Hannon BL, Zimmermann C, et al. Improving patient and caregiver outcomes in oncology: team-based, timely, and targeted palliative care. *CA Cancer J Clin* 2018; 68(5): 356–376.
- Gomes B, Calanzani N, Curiale V, et al. Effectiveness and cost-effectiveness of home palliative care services for adults with advanced illness and their caregivers. *Cochrane Database Syst Rev* 2013; 2022(7): CD007760.
- Higginson IJ and Evans CJ. What is the evidence that palliative care teams improve outcomes for cancer patients and their families? *Cancer J* 2010; 16(5): 423–435.
- Spilsbury K, Rosenwax L, Arendts G, et al. The impact of community-based palliative care on acute hospital use in the last year of life is modified by time to death, age and underlying cause of death. A population-based retrospective cohort study. *PLoS One* 2017; 12(9): e0185275.
- Bruera E, Kuehn N, Miller MJ, et al. The Edmonton Symptom Assessment System (ESAS): a simple method for the assessment of palliative care patients. *J Palliat Care* 1991; 7(2): 6–9.
- Covidence systematic review software. Melbourne, VIC: Veritas Health Innovation. www.covidence.org (accessed 1 December 2021).
- Higgins J P T, Altman D G, Gøtzsche P C, Jüni P, Moher D, Oxman A D et al. The Cochrane Collaboration's tool for assessing risk of bias in randomised trials *BMJ* 2011; 343 :d5928 doi:10.1136/bmj.d5928
- Sterne JAC, Hernán MA, Reeves BC, Savović J, Berkman ND, Viswanathan M, Henry D, Altman DG, Ansari MT, Boutron I, Carpenter JR, Chan AW, Churchill R, Deeks JJ, Hróbjartsson A, Kirkham J, Jüni P, Loke YK, Pigott TD, Ramsay CR, Regidor D, Rothstein HR, Sandhu L, Santaguida PL, Schünemann HJ, Shea B, Shrier I, Tugwell P, Turner L, Valentine JC, Waddington H, Waters E, Wells GA, Whiting PF, Higgins JPT. ROBINS-I: a tool for assessing risk of bias in non-randomized studies of interventions. *BMJ* 2016; 355; i4919; doi: 10.1136/bmj.i4919.
- Page MJ, McKenzie JE, Bossuyt PM, et al. The PRISMA 2020 statement: an updated guideline for reporting systematic reviews. *BMJ* 2021; 74: 790–799.
- Nordly M, Skov Benthien K, Vadstrup ES, et al. Systematic fast-track transition from oncological treatment to dyadic

- specialized palliative home care: DOMUS - a randomized clinical trial. *Palliat Med* 2019; 33(2): 135–149.
21. Benthien K, Nordly M, von Heymann-Horan A, et al. Causes of hospital admissions in Domus: a randomized controlled trial of specialized palliative cancer care at home. *J Pain Symptom Manag* 2018; 55(3): 728–736.
 22. Benthien K, Diasso P, von Heymann A, et al. Oncology to specialised palliative home care systematic transition: the Domus randomised trial. *BMJ Support Palliat Care* 2020; 10(3): 350–357.
 23. Mentz RJ, O'Connor CM, Granger BB, et al. Palliative care and hospital readmissions in patients with advanced heart failure: insights from the PAL-HF trial. *Am Heart J* 2018; 204: 202–204.
 24. Rogers JG, Patel CB, Mentz RJ, et al. Palliative care in heart failure: the PAL-HF randomized, controlled clinical trial. *J Am Coll Cardiol* 2017; 70(3): 331–341.
 25. Warraich HJ, O'Connor CM, Yang H, et al. African Americans with advanced heart failure are more likely to die in a health care facility than at home or in hospice: an analysis from the PAL-HF trial. *J Card Fail* 2019; 25(8): 693–694.
 26. Brännström M and Boman K. Effects of person-centred and integrated chronic heart failure and palliative home care. PREFER: a randomized controlled study. *Eur J Heart Fail* 2014; 16(10): 1142–1151.
 27. Brumley R, Enguidanos S, Jamison P, et al. Increased satisfaction with care and lower costs: results of a randomized trial of in-home palliative care. *J Am Geriatr Soc* 2007; 55(7): 993–1000.
 28. Hughes SL, Weaver FM, Giobbie-Hurder A, et al. Effectiveness of team-managed home-based primary care: a randomized multicenter trial. *JAMA* 2000; 284(22): 2877–2885.
 29. Radwany SM, Hazelett SE, Allen KR, et al. Results of the promoting effective advance care planning for elders (PEACE) randomized pilot study. *Popul Health Manag* 2014; 17(2): 106–111.
 30. Wong FK, Ng AY, Lee PH, et al. Effects of a transitional palliative care model on patients with end-stage heart failure: a randomised controlled trial. *Heart* 2016; 102(14): 1100–1108.
 31. Jordhøy MS, Fayers P, Saltnes T, et al. A palliative-care intervention and death at home: a cluster randomised trial. *Lancet* 2000; 356(9233): 888–893.
 32. Ahlner-Elmqvist M, Jordhøy MS, Jannert M, et al. Place of death: hospital-based advanced home care versus conventional care. A prospective study in palliative cancer care. *Palliat Med* 2004; 18(7): 585–593.
 33. Cross J, Fischer A, Shotton D, et al. Supporting choice: an innovative model of integrated palliative care funded by a private health insurer. *Intern Med J* 2020; 50: 931–937.
 34. Smeenk FW, de Witte LP, van Haastregt JC, et al. Transmural care. A new approach in the care for terminal cancer patients: its effects on re-hospitalization and quality of life. *Patient Educ Couns* 1998; 35(3): 189–199.
 35. Kalluri M, Claveria F, Ainsley E, et al. Beyond idiopathic pulmonary fibrosis diagnosis: multidisciplinary care with an early integrated palliative approach is associated with a decrease in acute care utilization and hospital deaths. *J Pain Symptom Manag* 2018; 55(2): 420–426.
 36. Lawson BJ, Burge FI, McIntyre P, et al. Can the introduction of an integrated service model to an existing comprehensive palliative care service impact emergency department visits among enrolled patients? *J Palliat Med* 2009; 12(3): 245–252.
 37. Pace A, Di Lorenzo C, Capon A, et al. Quality of care and rehospitalization rate in the last stage of disease in brain tumor patients assisted at home: a cost effectiveness study. *J Palliat Med* 2012; 15(2): 225–227.
 38. Tan WS, Lee A, Yang SY, et al. Integrating palliative care across settings: a retrospective cohort study of a hospice home care programme for cancer patients. *Palliat Med* 2016; 30(7): 634–641.
 39. Groenewoud AS, Wichmann AB, Dijkstra L, et al. Effects of an integrated palliative care pathway: more proactive GPs, well timed, and less acute care: a clustered, partially controlled before-after study. *J Am Med Dir Assoc* 2021; 22: 297–304.
 40. Quill TE and Abernethy AP. Generalist plus specialist palliative care – creating a more sustainable model. *N Engl J Med* 2013; 368(13): 1173–1175.
 41. Dalgaard KM, Bergenholtz H, Nielsen ME, et al. Early integration of palliative care in hospitals: a systematic review on methods, barriers, and outcome. *Palliat Support Care* 2014; 12(6): 495–513.
 42. Huntley AL, Johnson R, King A, et al. Does case management for patients with heart failure based in the community reduce unplanned hospital admissions? A systematic review and meta-analysis. *BMJ Open* 2016; 6(5): e010933.
 43. Ishikawa T, Fukui S and Okamoto Y. Advance care planning and home death in patients with advanced cancer: a structured interview analysis. *Int J Palliat Nurs* 2018; 24(9): 418–426.
 44. Skorstengaard MH, Jensen AB, Andreassen P, et al. Advance care planning and place of death, hospitalisation and actual place of death in lung, heart and cancer disease: a randomised controlled trial. *BMJ Support Palliat Care* 2020; 10(4): e37.
 45. Higginson IJ, Daveson BA, Morrison RS, et al. Social and clinical determinants of preferences and their achievement at the end of life: prospective cohort study of older adults receiving palliative care in three countries. *BMC Geriatr* 2017; 17(1): 271.
 46. Hoare S, Morris ZS, Kelly MP, et al. Do patients want to die at home? A systematic review of the UK literature, focused on missing preferences for place of death. *PLoS One* 2015; 10(11): e0142723.
 47. Craig P, Dieppe P, Macintyre S, et al. Developing and evaluating complex interventions: the new Medical Research Council guidance. *BMJ* 2008; 337: a1655.
 48. Smeenk FW, van Haastregt JC, Gubbels EM, et al. Care process and satisfaction analysis of a transmural home care program. *Int J Nurs Stud* 1998; 35(3): 146–154.