

Blended interventions to change behavior in patients with chronic somatic disorders

systematic review

Author(s)

Kloek, Corelien; Bossen, Daniël; de Bakker, Dinny H.; Veenhof, Cindy; Dekker, Joost

DOI

[10.2196%2Fjmir.8108](https://doi.org/10.2196%2Fjmir.8108)

Publication date

2017

Document Version

Final published version

Published in

Journal of Medical Internet Research

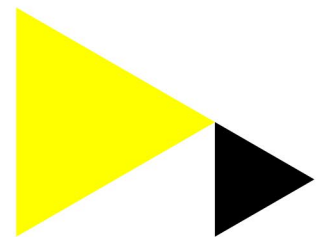
License

CC BY

[Link to publication](#)

Citation for published version (APA):

Kloek, C., Bossen, D., de Bakker, D. H., Veenhof, C., & Dekker, J. (2017). Blended interventions to change behavior in patients with chronic somatic disorders: systematic review. *Journal of Medical Internet Research*, 19(12). <https://doi.org/10.2196%2Fjmir.8108>



General rights

It is not permitted to download or to forward/distribute the text or part of it without the consent of the author(s) and/or copyright holder(s), other than for strictly personal, individual use, unless the work is under an open content license (like Creative Commons).

Disclaimer/Complaints regulations

If you believe that digital publication of certain material infringes any of your rights or (privacy) interests, please let the Library know, stating your reasons. In case of a legitimate complaint, the Library will make the material inaccessible and/or remove it from the website. Please contact the library: <https://www.amsterdamuas.com/library/contact/questions>, or send a letter to: University Library (Library of the University of Amsterdam and Amsterdam University of Applied Sciences), Secretariat, Singel 425, 1012 WP Amsterdam, The Netherlands. You will be contacted as soon as possible.

Review

Blended Interventions to Change Behavior in Patients With Chronic Somatic Disorders: Systematic Review

Corelien Kloek^{1,2,3,4*}, MSc; Daniël Bossen^{5,6*}, PhD; Dinny H de Bakker^{1,2†*}, PhD; Cindy Veenhof^{3,4*}, PhD; Joost Dekker^{7,8,9}, PhD

¹Tranzo, Tilburg University, Tilburg, Netherlands

²Netherlands Institute for Health Services Research, Utrecht, Netherlands

³Research Group Innovation of Human Movement Care, HU University of Applied Sciences, Utrecht, Netherlands

⁴Brain Center Rudolf Magnus, Department of Rehabilitation, Physical Therapy Science & Sports, University Medical Center Utrecht, Utrecht, Netherlands

⁵ACHIEVE Centre of Expertise, Faculty of Health, Amsterdam University of Applied Sciences, Amsterdam, Netherlands

⁶Coronel Institute of Occupational Health, Amsterdam Public Health Research Institute, Academic Medical Center, University of Amsterdam, Amsterdam, Netherlands

⁷EMGO Institute, VU University Medical Center Amsterdam, Amsterdam, Netherlands

⁸Department of Rehabilitation Medicine, VU University Medical Center Amsterdam, Amsterdam, Netherlands

⁹Department of Psychiatry, VU University Medical Center Amsterdam, Amsterdam, Netherlands

†deceased

*these authors contributed equally

Corresponding Author:

Corelien Kloek, MSc

Tranzo

Tilburg University

Warandelaan 2

Tilburg, 5037 AB

Netherlands

Phone: 31 884812546

Email: corelien.kloek@hu.nl

Abstract

Background: Blended behavior change interventions combine therapeutic guidance with online care. This new way of delivering health care is supposed to stimulate patients with chronic somatic disorders in taking an active role in their disease management. However, knowledge about the effectiveness of blended behavior change interventions and how they should be composed is scattered.

Objective: This comprehensive systematic review aimed to provide an overview of characteristics and effectiveness of blended behavior change interventions for patients with chronic somatic disorders.

Methods: We searched for randomized controlled trials published from 2000 to April 2017 in PubMed, Embase, CINAHL, and Cochrane Central Register of Controlled Trials. Risk of bias was assessed using the Cochrane Collaboration tool. Study characteristics, intervention characteristics, and outcome data were extracted. Studies were sorted based on their comparison group. A best-evidence synthesis was conducted to summarize the effectiveness.

Results: A total of 25 out of the 29 included studies were of high quality. Most studies (n=21; 72%) compared a blended intervention with no intervention. The majority of interventions focused on changing pain behavior (n=17; 59%), and the other interventions focused on lifestyle change (n=12; 41%). In addition, 26 studies (90%) focused on one type of behavior, whereas 3 studies (10%) focused on multiple behaviors. A total of 23 studies (79%) mentioned a theory as basis for the intervention. The therapeutic guidance in most studies (n=18; 62%) was non face-to-face by using email, phone, or videoconferencing, and in the other studies (partly), it was face-to-face (n=11; 38%). In 26 studies (90%), the online care was provided via a website, and in 3 studies (10%) via an app. In 22 studies (76%), the therapeutic guidance and online care were integrated instead of two separate aspects. A total of 26 outcome measures were included in the evidence synthesis comparing blended interventions with no intervention: for the coping strategy catastrophizing, we found strong evidence for a significant effect. In addition, 1 outcome measure was included in the evidence synthesis comparing blended interventions with face-to-face interventions, but no evidence

for a significant effect was found. A total of 6 outcome measures were included in the evidence synthesis comparing blended interventions with online interventions, but no evidence for a significant effect was found.

Conclusions: Blended behavior change interventions for patients with chronic somatic disorders show variety in the type of therapeutic guidance, the type of online care, and how these two delivery modes are integrated. The evidence of the effectiveness of blended interventions is inconsistent and nonsignificant for most outcome measures. Future research should focus on which type of blended intervention works for whom.

(*J Med Internet Res* 2017;19(12):e418) doi:[10.2196/jmir.8108](https://doi.org/10.2196/jmir.8108)

KEYWORDS

telemedicine; chronic disease; behavior

Introduction

An important challenge of today's health care is the management of patients with chronic somatic disorders. In addition, 1 out of 3 European adults deal with consequences of conditions such as heart failure, diabetes, asthma, or rheumatism [1]. Roughly, 50 million of them have even more than one chronic disorder (ie, multimorbidity) [2]. Patients' behavior can influence the progression of their disorder and their perceived health, particularly when it concerns a lifestyle-related chronic disorder [3]. For those who need support in taking actions related to their lifestyle, a behavior change intervention can be helpful [4]. Examples are an education program for patients with rheumatoid arthritis [5] or an intervention for patients with chronic obstructive pulmonary disease (COPD) focused on physical activity, smoking, disease knowledge, and emotional wellbeing [6].

Blended Interventions

An upcoming and new delivery mode for behavior change interventions is the use of Internet technologies, such as websites and apps. Although traditional behavior change interventions in primary care are restricted to face-to-face sessions, websites and apps are available at any time and place and can act as an extension of care provided by the professional. Online interventions without therapeutic guidance, however, struggle with disappointing adherence rates [7]. Therefore, it is recommended to combine online interventions with therapeutic guidance. The combination of online care and therapeutic guidance is called blended care, also known as technology supported care [7,8]. Bringing together the personal attention of a professional and the accessibility of an online tool is seen as a highly promising combination, which can stimulate patients to take an active role in their disease management [9]. The potential of integrating online care and technology within regular care for patients with chronic somatic disorders is also described in the recently developed eHealth Enhanced Chronic Care Model. The authors extended the original Chronic Care Model with eHealth tools to promote an informed and activated patient, to create productive interactions with the health care provider, and to increase patients' self-management [10,11].

Characteristics of Blended Interventions

Present blended interventions have in common that they consist of an online element complemented with therapeutic guidance; however, they show a wide variety in how both elements are delivered and combined. For example, the online part can be

delivered via a website with solely information texts, but supplementary videos, games, and links can be used as well. In addition, the guidance by a therapist can be delivered in various ways, for example, by providing traditional face-to-face sessions, contact by email, or by videoconferencing [12]. One of the challenges in delivering blended care is the integration of online care and therapeutic guidance instead of two separate components [8]. When integrated properly, the website or app is not only supportive to the usual therapeutic guidance but is also a substantial element of the intervention as a whole [13].

Although blended care is seen as promising in terms of effectiveness and improving health care access, the actual usage in daily primary care practice is lagging behind [14]. More knowledge about the characteristics and the effectiveness of blended behavior change interventions may support the usage in daily health care practice. However, to our knowledge, a clear overview of blended behavior change interventions is missing in literature. We conducted a systematic literature review to investigate the characteristics and the effectiveness of blended behavior change interventions for patients with chronic somatic disorders. Chronic somatic disorders are defined as health conditions that are persistent or long-lasting [15]. Mental illnesses were excluded from this review. The first goal was to investigate the varieties of intervention characteristics of behavior change interventions in terms of type of online care, type of therapeutic guidance, the extent of online and therapeutic integration, and the theoretical basis of the intervention [16]. The second aim was to study the effectiveness of blended interventions for behavior change. The following questions were studied:

- Which types of blended behavior change interventions for patients with chronic somatic disorders are available in literature?
- What is the effectiveness in comparison with no intervention, face-to-face behavior change interventions, and online behavior change interventions without therapeutic guidance?

Methods

Search Strategy

A comprehensive literature search was conducted using PubMed, Embase, CINAHL, and Cochrane Central Register of Controlled Trials from January 2000 to April 2017. Studies published before 2000 were excluded because of the rapid developments within the field of eHealth. A combination of the following constructs

was used: chronic somatic disorder, eHealth, behavior change intervention, and intervention study. [Multimedia Appendix 1](#) shows the full range of keywords used for each construct.

Keywords were adapted to control vocabularies for different databases. Additionally, reference lists of included studies and other systematic reviews [13-18] were hand-searched for potentially relevant studies.

Study Selection and Eligibility Criteria

First step of the study selection consisted of the screening of titles and abstracts of all retrieved studies on eligibility. This was performed by 2 researchers (CK and DB). Subsequently, full texts of all initially relevant studies were independently checked for inclusion by the same researchers. Disagreements about study inclusion were discussed until consensus was reached. Inclusion criteria are provided in [Textbox 1](#). Studies on decision support systems or interventions using solely reminder messages as online component were excluded. Interventions in which the online component primarily consisted of health tracking technology or self-monitoring (eg, accelerometer or glucose meter) were also excluded, unless the tracking technology was integrated in a behavior change intervention with information and/or assignments.

Data Extraction

Data were extracted from studies that met the inclusion criteria. These data comprised study characteristics (type of study, year of publication, type of control group, outcome measures, and timing of outcome assessment), study population (number of participants, age, sex, and type of chronic disorder), intervention characteristics (target behavior, described theoretical basis, duration of intervention, delivery mode and frequency of Internet-based element, delivery mode and frequency of therapeutic guidance, integration of online care, and therapeutic guidance), and type of control intervention. A modified version of the delivery coding schemes of Webb et al [16,17] was used for coding the Internet-based element: (1) assignments, (2) information, (3) enriched information environment (eg, supplementary content and links, videos, and games), (4) automated tailored feedback based on individual progress monitoring (eg, comparison with norms or goals, reinforcing messages, or coping messages), (5) automated follow-up messages (reminders, tips, and encouragement). Coded delivery modes for the therapeutic guidance were as follows: (1) option to request for advice (ask the expert, expert-led discussion board or chat sessions), (2) face-to-face contact, (3) email contact

(scheduled), (4) phone calls, (5) short messaging service, (6) videoconferencing, and (7) discussion forum with peers. For the integration of therapeutic guidance and online care, we distinguished: (a) an integrated blended delivery mode for studies which mentioned that the therapeutic guidance was related to the content of the online care, for example, by discussing assignments or program progress, and (b) a nonintegrated blended delivery mode that was defined when the online care and the therapeutic guidance were described as two separate aspects or nothing was mentioned in the description of the therapeutic guidance about discussing or using a website or an app. Interventions in which the therapist only provided technical support and did not have access to online assignments and progress were also seen as nonintegrated.

Studies were sorted based on their type of control intervention: (1) no intervention, (2) face-to-face behavior change intervention, and (3) online behavior change intervention without therapeutic guidance.

All outcome measures were distracted and grouped into the following five constructs: (1) symptoms and signs, (2) limitations, (3) dealing with the chronic condition (cognitive and behavioral), (4) emotional outcomes, and (5) quality of life. Means and standard deviations for all outcome measurements (pre- and postvalues) were extracted. A *P* value of <.05 was considered a significant indication for effectiveness.

Quality Assessment

All articles were independently assessed on methodological quality by 2 researchers (CK and DB). For this assessment, the risk of bias criteria list of the Cochrane collaboration was used [18]. A total of 10 dimensions were assessed, namely, random sequence generation (selection bias), allocation concealment (selection bias), blinding of outcome assessor (detection bias), incomplete outcome data (attrition bias), selective reporting of results (reporting bias), group similarity at baseline (selection bias), cointerventions (performance bias), compliance (performance bias), intention-to-treat analysis, and timing of outcome assessments (detection bias). The criteria of blinding of participants and personnel (performance bias) were not used, as blinding is not possible in the types of intervention investigated in this review. Each study was rated as low risk, high risk, or unclear when there were no data to assess this criterion. Dimensions scored as low risk received 1 point. Dimensions scored as high risk or unclear received 0 points.

Textbox 1. Inclusion criteria for this study.

- randomized controlled trial published in the English language
- the patient sample comprised adults (≥ 18 years) with chronic somatic disorders
- the study included an intervention aimed to change one or more of the following behaviors: physical activity, dietary intake, pain coping, and time spent in sedentary activity
- the intervention consisted of a combination of online care provided through a website, app, or automatic email and contains at least two episodes of contact with a health care professional (either face-to-face, personal emails, telephone, or videoconference)
- the blended intervention was compared with waiting list or usual care, a face-to-face intervention, or an online intervention

Table 1. Best-evidence synthesis.

Level of evidence	Description
Strong evidence	Consistent findings in multiple (≥ 3) high-quality RCTs ^a
Moderate evidence	Consistent findings in at least one high-quality study and at least one low-quality study, or consistent findings in multiple low-quality studies
Inconsistent evidence	Inconsistent findings in multiple studies
Insufficient evidence	Only one or two studies available

^aRCTs: randomized controlled trials.

Points were counted and summarized as a risk of bias score (range 0-10, where 10 indicates low risk of bias for all 10 dimensions). Studies with a score of ≥ 6 were judged as high methodological quality. Interobserver agreement was expressed as the percentage of agreement on bias dimensions between CK and DB.

Data Analysis

A best-evidence synthesis was conducted to summarize the effectiveness of blended behavior change interventions, using the same method used by Proper et al [19]. For this synthesis, the number of studies, methodological quality, and consistency of findings were all taken into account. A distinction was made for each of the 3 types of control conditions. Outcome measurements that were measured 3 times or more were sorted on level of evidence: strong evidence, moderate evidence, and inconsistent evidence (Table 1). When there were at least three high methodological quality studies, studies with low quality were disregarded from the evidence synthesis. When at least 75% of the studies showed results in the same direction, results were considered consistent. In case of 3-arm studies, all eligible between-group comparisons were included and treated as different studies.

Results

Search Results and Study Characteristics

The initial literature search resulted in 8992 articles. After deleting duplicates, 6192 unique articles were screened on title and abstract. A total of 111 selected articles were studied on full text, whereof 29 articles met the inclusion criteria. An overview of the selection procedure is shown in Figure 1.

Characteristics of Selected Studies

An overview of study characteristics is shown in Multimedia Appendix 2. Sample size ranged from 45 to 463 participants. A total of 17 interventions were targeted on changing pain thinking and pain behavior related to chronic pain [20,21], irritable bowel syndrome [22,23], chronic tinnitus [24], diabetes mellitus [25], multiple sclerosis [26], rheumatoid arthritis [27], fibromyalgia [28], psoriasis [29], and cancer [30]. Furthermore, 12 studies were targeted on changing lifestyle behavior (ie, physical activity, nutrition, and sedentary behavior) for patients with obesity [31,32], diabetes mellitus [33,34], chronic obstructive pulmonary disease [34], multiple sclerosis [35,36], and rheumatoid arthritis [37]. Moreover, 1 study was targeted on asthma self-management skills [38]. Out of all 29 included randomized controlled trials, 21 studies had 2 study arms, 5

studies had 3 study arms, and 3 studies used a 4-arm design. Divided per control group, 21 studies compared the blended intervention with no intervention, 5 studies made a comparison with a face-to-face intervention, and 10 studies compared a blended intervention with an online self-guided intervention. The number of outcome measures per study ranged from 1 to 21.

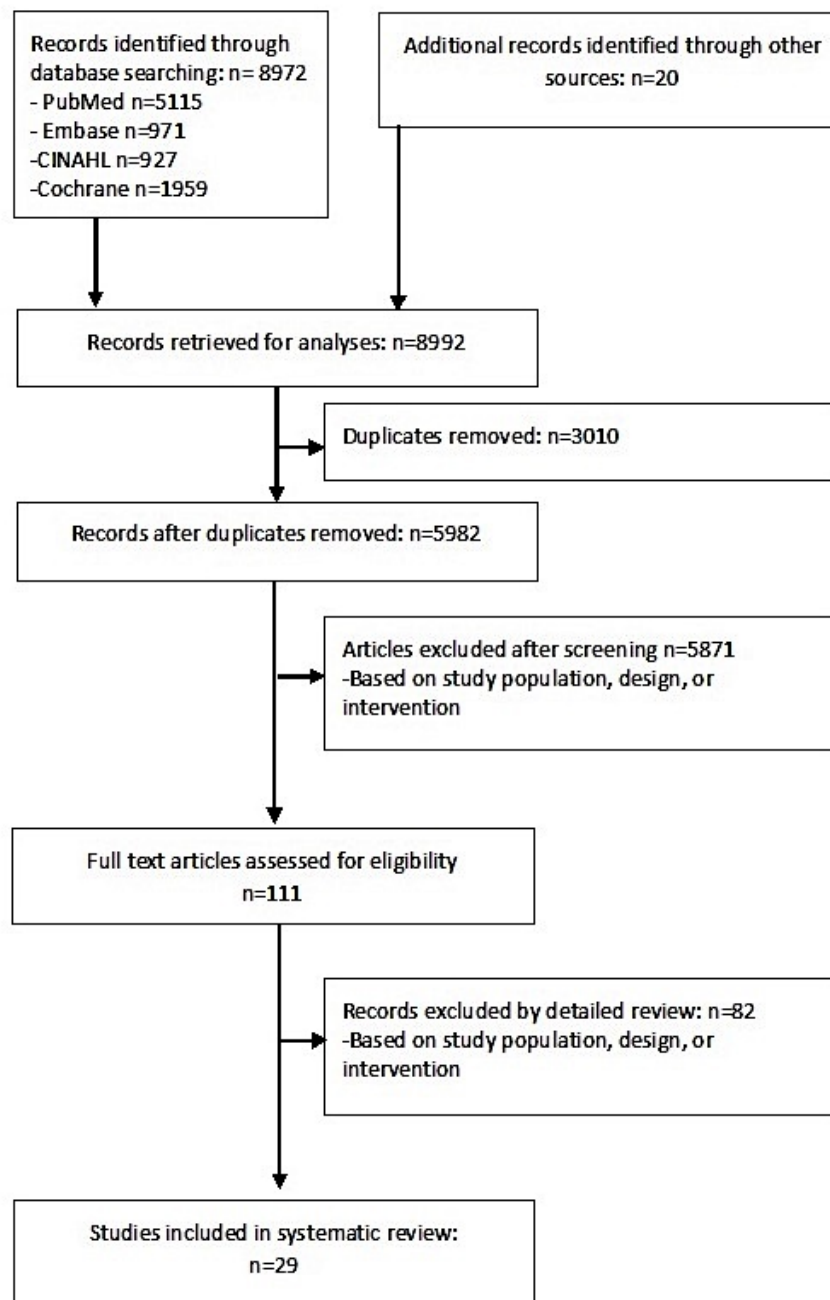
Methodological Quality

Ten different sources of bias were rated to assess the methodological quality of the studies (Multimedia Appendix 3). There was 87% agreement between the reviewers. After discussion, consensus was reached and no third reviewer had to be consulted.

In total, 25 studies were rated as high quality [20,21,23-35,37,39,41-49] and 4 studies as low quality [22,36,38,40]. The most frequent sources of bias were not reporting blinding of the outcome assessor (90% of studies) and information about patients' use of cointerventions (93% of studies).

Characteristics of Blended Behavior Change Interventions

An overview of intervention characteristics is shown in Multimedia Appendix 2. The length of the interventions ranged from 5 weeks to 12 months. Most interventions focused on one target behavior [20-30,32,34-46,48], and 3 interventions were focused on multiple behaviors (ie, nutrition and physical activity) [31,33,47]. A total of 23 studies mentioned a theory as basis for the intervention, most frequently the principles of cognitive behavior therapy [20-22,24,26-30,32,43,44], social cognitive theory [31,36,45], and acceptance and commitment therapy [23,42,48]. In contrast, 6 studies did not mention any theory [34,35,37-39,47]. In 11 studies, the therapeutic guidance was delivered through face-to-face contact [21,30-33,37-39], mostly in combination with email or phone communication [27,29,30,32-34,37-39]. In 18 studies, the therapeutic guidance was non face-to-face [20,22-26,28,34,38,40-48]. In 12 studies, patients had the option to request for advice at a random moment [23-25,27,30,32,34,38,39,45-47]. Frequency of therapeutic guidance varied from weekly contact to bimonthly. A total of 22 studies delivered online care through a website, and the other 3 studies via an app [31,34,47]. Furthermore, 21 interventions were enriched with videos, links, games, automated tailored feedback or automated reminder messages, and in 8 studies, the online care consisted solely of assignments and information [22-24,29,37,39,40,45].

Figure 1. Flowchart of selection procedure.

In 7 studies, nothing was mentioned about the use of the website or app during the therapeutic guidance, and therefore, they were classified as nonintegrated [21,24,29-31,37,47]. In all other interventions, the online care and the therapeutic guidance were described to be integrated. For example, in the study of De Boer et al [20], the psychologist emailed personal feedback on homework assignments.

In the study of Buhrman et al [43], the therapist tailored the online care by selecting treatment modules that were in line with the individual needs of the patient.

Effectiveness of Blended Care Versus no Intervention

Multimedia Appendix 4 demonstrates 21 studies that compared a blended behavior intervention with no intervention. A

complete overview with levels of evidence is given in Table 2. Within the construct of symptoms and signs, strong evidence for a nonsignificant effect was seen for pain reduction [27,28,30,40-44,48], fatigue reduction [27-30], and body weight reduction [32,39]. Within the construct of limitations, inconsistent evidence was found for disability improvement [23,43,44,48]. With regard to the construct dealing with the chronic condition: cognitive measures, strong evidence for a significant effect was found for reducing catastrophizing thoughts [22,28,40-43,48]. Inconsistent evidence was found for improving acceptance of the chronic condition [24,44], reducing fear of movement [28,44], improving pain self-efficacy [28,44], and the coping strategy praying or hoping [40-43].

Table 2. Effectiveness of blended behavior change interventions compared with no intervention, face-to-face behavior change intervention, and online behavior change intervention.

Control conditions and constructs	Outcome construct
No intervention	
Symptoms and signs	
Pain	Strong evidence for a nonsignificant effect
Fatigue	Strong evidence for a nonsignificant effect
Body weight	Strong evidence for a nonsignificant effect
Limitations	
Disability	Inconsistent evidence
Dealing with the chronic condition: cognitive measures	
Coping strategy: catastrophizing	Strong evidence for a significant effect
Acceptance	Inconsistent evidence
Coping strategy: praying or hoping	Inconsistent evidence
Fear of movement	Inconsistent evidence
Pain self-efficacy	Inconsistent evidence
Coping strategy: diverting attention	Strong evidence for a nonsignificant effect
Coping strategy: reinterpret pain sensation	Strong evidence for a nonsignificant effect
Coping strategy: coping self-statements	Strong evidence for a nonsignificant effect
Coping strategy: ignore pain sensations	Strong evidence for a nonsignificant effect
Perceived life control	Strong evidence for a nonsignificant effect
Perception of support received from others	Strong evidence for a nonsignificant effect
Perception of received punishing responses	Strong evidence for a nonsignificant effect
Perception of received solicitous responses	Strong evidence for a nonsignificant effect
Perception of received distracting responses	Strong evidence for a nonsignificant effect
Dealing with the chronic condition: behavior measures	
Coping strategy: increase activity level	Strong evidence for a nonsignificant effect
Pain interference with daily activities	Strong evidence for a nonsignificant effect
Emotional outcomes	
Anxiety	Inconsistent evidence
Depression	Inconsistent evidence
Affective distress	Inconsistent evidence
Quality of life	
Generic quality of life	Inconsistent evidence
Health-related quality of life: emotional role impairment	Inconsistent evidence
Health-related quality of life: emotional role impairment	Inconsistent evidence
Face-to-face behavior change intervention	
Limitations	
Physical activity	Inconsistent evidence
Online behavior change intervention	
Symptoms and signs	
Pain	Inconsistent evidence
Body mass index	Inconsistent evidence
Body weight	Strong evidence for a nonsignificant effect

Control conditions and constructs	Outcome construct
Limitations	
Physical activity	Inconsistent evidence
Emotional outcomes	
Anxiety	Strong evidence for a nonsignificant effect
Depression	Inconsistent evidence

Strong evidence for a nonsignificant effect was found for the coping strategies diverting attention, reinterpret pain sensations, coping self-statements and ignorance of pain sensations, perceived life control, perception of support received from others, perception of received punishing responses, perception of received solicitous responses, and perception of received distracting responses [40-43].

Within the construct dealing with the chronic condition: behavioral measures, strong evidence for a nonsignificant effect was found for pain interference with daily activities [28,40-43,48] and strong evidence for a nonsignificant effect was found for the coping strategy increasing activity level [40-43]. Within the construct emotional outcomes, inconsistent evidence was found for reducing anxiety [22,24,26-29,40-44,48], depression [24,26-30,40-44,48], and affective distress [40-43]. Inconsistent evidence was also found for the improvement of generic quality of life [41-43] and emotional and physical health-related quality of life [27-29,34].

Effectiveness of Blended Care Versus Face-to-Face

Multimedia Appendix 5 demonstrates 5 studies that compared a blended behavior intervention with a face-to-face behavior change intervention. A complete overview with levels of evidence is given in Table 2. Within the construct limitations, inconsistent evidence was found for increasing levels of physical activity [31,34]. All other outcome measures were measured less than 3 times, indicating insufficient evidence.

Effectiveness of Blended Care Versus Online Care

Multimedia Appendix 6 shows 10 studies that compared a blended behavior intervention with an online behavior change intervention. A complete overview with levels of evidence is given in Table 2. Within the construct symptoms and signs, inconsistent evidence was found for reduction of pain [44,48] and body mass index [31,33]. Strong evidence for a nonsignificant effect was found for body weight reduction [31-33]. Within the construct limitations, strong evidence for a nonsignificant effect was found for improving physical activity levels [31,33,37,45,46]. Within the construct emotional outcomes, strong evidence for a nonsignificant effect was found for reducing anxiety [44,48] and depression [25,44,46,48].

Discussion

Principal Findings

This review provides an overview of the intervention characteristics of a new and promising field within health care for patients with chronic somatic disorders. The characteristics of the included blended behavior change interventions showed

a wide heterogeneity. For example, length of interventions ranged from 5 weeks to 12 months. A previous systematic review that studied factors related to online adherence showed that shorter interventions are related to higher usage rates [50]. On the other hand, it is also known that long-term maintenance of behavior change is challenging [51] and that an extension of the intervention with follow-up booster sessions improves the overall effectiveness of face-to-face interventions [52]. The majority of interventions focused on one type of behavior. As many people have multiple unhealthy behaviors linked to risk factors for different chronic diseases, studies should focus on changing multiple behaviors [4]. Such holistic programs have a great potential for targeting complete health profiles and stimulating patients to take an active role in their health management.

The theoretical basis of the intervention content was most frequently based on the principles of cognitive behavior therapy. The aim of the cognitive behavior therapy is to change individuals' unhelpful thoughts, beliefs, and behaviors [53]. In less than half of the studies, the therapeutic guidance was delivered face-to-face, whereas in the other studies, it was delivered completely at distance. Future research is needed to investigate whether face-to-face contact, guidance at distance, or a combination of multiple delivery modes are more or less effective for the overall effectiveness of a blended intervention. The review of Webb et al [16] showed that an "ask the expert" facility is related to higher effectiveness. This additional option was used in 12 out of 29 studies. Furthermore, it is known that the use of an enriched information environment is related to higher effectiveness [16]. Such supplementary content, such as videos and links to informative websites, was used in most interventions. In summary, we can conclude that a wide diversity was seen in the characteristics or ingredients of blended interventions. Given the considerable heterogeneity in the interventions, it was difficult to isolate subtypes of blended interventions for patients with chronic somatic disorders. Future research should focus on which type of blended intervention works for whom, for example, by using subgroup analyses and comparing different types of blended care.

Almost all included studies described that the therapeutic guidance and the online care were integrated with each other. Examples of integration of therapeutic guidance and online care were the provision of therapeutic feedback on online assignments or tailoring of the online intervention by the therapist. This high number of integrated blended interventions surprised us, as in literature, the interconnection of the therapeutic and the Web-based part is described as one of the biggest challenges of blended care [8,54]. When Web-based apps are integrated within health care, online care is often used

as an additional component to usual care, instead of being a substantial element of the intervention as a whole [8]. Although the interventions were described as interconnected, analyses of user experiences are needed to draw conclusions about actual experienced integration.

A wide range of outcome measures were included in our evidence synthesis comparing blended interventions with no interventions or online blended interventions without therapeutic guidance. For some outcome measures, we found inconsistent evidence, and for other outcome measures, we found strong evidence for a nonsignificant effect. The lack of evidence for blended interventions, even when comparing with no intervention, is surprising. Although blended care is described as best of both worlds [8], results of this systematic review do not support this expectation. Before broad-scale implementation of blended behavior change interventions in daily practice, further investigation of how blended interventions should be composed is needed.

A minority of studies compared blended interventions with face-to-face interventions. The evidence synthesis of this comparison showed inconsistent evidence for improvement in physical activity. Particularly, for the comparison of blended behavior change interventions with face-to-face interventions, it would be interesting to investigate cost-effectiveness, long-term effectiveness, and patient satisfaction. The potential added value of blended care above face-to-face care may be found in these outcome measures instead of outcome measures related to symptoms and signs, limitations, behavior, emotions, and quality of life. To illustrate, if face-to-face sessions are substituted by online care, blended interventions may be cheaper than usual care [55]. Another advantage of blended interventions over face-to-face care is the possibility to overcome geographical barriers, as therapeutic guidance in these interventions can be served by a computer or mobile phone.

Limitations

A methodological limitation of our evidence synthesis is the use of multiple outcome measures and multiple comparisons. This multiplicity may result in an increased risk of false-positive statistically significant indications of the effectiveness of blended behavior change interventions [56]. Moreover, 4 studies were conducted by the same research group [40-43]. These 4 studies investigated interventions targeted on the same behavior and generally used the same measurement instruments. The predominance of these 4 studies within the evidence synthesis may also lead to false-positive statistically significant indications of the effectiveness of blended behavior change interventions.

Conflicts of Interest

None declared.

Multimedia Appendix 1

Keywords per construct (PubMed version).

[PDF File (Adobe PDF File), 26KB - [jmir_v19i12e418_app1.pdf](#)]

Implications for Future Research

This review investigated a huge heterogeneity in how blended interventions were composed. For future research, we suggest investigating the effectiveness of different intervention components such as intervention duration, type of face-to-face guidance, and type of online care. Studies included in this review provided the same intervention, with the same amount of ingredients to the entire group of included patients. However, with respect to individual differences, it is presumed that different patients benefit from different blended interventions. For example, considering the ratio between online care and therapeutic guidance, one patient may benefit from more online support, whereas others need more therapeutic guidance. To determine the most optimal ratio in the treatment of patients with depression, the Fit for blended care instrument was recently developed [8]. Future studies could investigate whether such an instrument is useful in the treatment of patients with chronic somatic disorders.

Next, there is a substantial need for studies that compare blended interventions with face-to-face interventions. Only 5 studies compared a blended intervention with face-to-face care [20,24,31,33,34], which hampered drawing conclusions for this comparison. For future trials, we recommend to compare blended behavior change interventions with a control group that receives face-to-face treatment and also to include cost-effectiveness outcomes, patient satisfaction, self-management skills, attrition, or reach of the intervention. This will provide more clinically relevant information about the additional value of integrating therapeutic guidance and online care.

Conclusions

To our knowledge, this is the first comprehensive overview of characteristics of blended behavior change interventions in patients with chronic somatic disorders. The wide variety of intervention characteristics, in terms of type and dose of therapeutic guidance, the type and dose of online care, and how these two delivery modes are integrated, hampered the investigation of intervention subtypes within the entire spectrum of blended behavior change interventions. Overall, within this heterogenic sample of studies, we found no evidence for the effectiveness of blended behavior change interventions in patients with chronic somatic disorders compared with no intervention, face-to-face behavior change interventions, or with online interventions without face-to-face support. With respect to the potential of blended behavior change interventions, we suggest investigating which type of blended intervention works for whom to come to personalized blended care for patients with chronic somatic disorders.

Multimedia Appendix 2

Characteristics of studies, participants, and interventions.

[[PDF File \(Adobe PDF File\), 97KB - jmir_v19i12e418_app2.pdf](#)]

Multimedia Appendix 3

Risk of bias assessment.

[[PDF File \(Adobe PDF File\), 62KB - jmir_v19i12e418_app3.pdf](#)]

Multimedia Appendix 4

Outcome measures of studies with no intervention as control condition.

[[PDF File \(Adobe PDF File\), 130KB - jmir_v19i12e418_app4.pdf](#)]

Multimedia Appendix 5

Outcome measures of studies with control conditions online behavior change intervention.

[[PDF File \(Adobe PDF File\), 77KB - jmir_v19i12e418_app5.pdf](#)]

Multimedia Appendix 6

Outcome measures of studies with control conditions face-to-face behavior change intervention.

[[PDF File \(Adobe PDF File\), 44KB - jmir_v19i12e418_app6.pdf](#)]

References

1. Eurostat. 2015 Jul 27. People having a long-standing illness or health problem, by sex, age and labour status URL: http://appsso.eurostat.ec.europa.eu/nui/show.do?dataset=hlth_silc_04&lang=en
2. Jansen D, Struckmann V, Snoeijs S. ICARE4EU: improving care for people with multiple chronic conditions in Europe. *Int J Integr Care* 2014;14. [doi: [10.5334/ijic.1670](https://doi.org/10.5334/ijic.1670)]
3. World Health Organization. Global status report on noncommunicable diseases 2010 URL: http://www.who.int/nmh/publications/ncd_report_full_en.pdf [accessed 2017-12-01] [WebCite Cache ID 6vNdmK4zp]
4. Prochaska J, Prochaska J. A review of multiple health behavior change interventions for primary prevention. *Am J Lifestyle Med* 2011 May;5(3):1-21 [FREE Full text] [doi: [10.1177/1559827610391883](https://doi.org/10.1177/1559827610391883)] [Medline: [24358034](https://pubmed.ncbi.nlm.nih.gov/24358034/)]
5. Niedermann K, Buchi S, Ciurea A, Kubli R, Steurer-Stey C, Villiger PM, et al. Six and 12 months' effects of individual joint protection education in people with rheumatoid arthritis: a randomized controlled trial. *Scand J Occup Ther* 2012 Jul;19(4):360-369. [doi: [10.3109/11038128.2011.611820](https://doi.org/10.3109/11038128.2011.611820)] [Medline: [21936735](https://pubmed.ncbi.nlm.nih.gov/21936735/)]
6. Mitchell K, Johnson-Warrington V, Apps L, Bankart J, Sewell L, Williams JE, et al. A self-management programme for COPD: a randomised controlled trial. *Eur Respir J* 2014 Dec;44(6):1538-1547 [FREE Full text] [doi: [10.1183/09031936.00047814](https://doi.org/10.1183/09031936.00047814)] [Medline: [25186259](https://pubmed.ncbi.nlm.nih.gov/25186259/)]
7. Kelders S, Kok R, Ossebaard H, Van Gemert-Pijnen JE. Persuasive system design does matter: a systematic review of adherence to web-based interventions. *J Med Internet Res* 2012 Nov 14;14(6):e152 [FREE Full text] [doi: [10.2196/jmir.2104](https://doi.org/10.2196/jmir.2104)] [Medline: [23151820](https://pubmed.ncbi.nlm.nih.gov/23151820/)]
8. Wentzel J, van der Vaart R, Bohlmeijer E, van Gemert-Pijnen JE. Mixing online and face-to-face therapy: how to benefit from blended care in mental health care. *JMIR Ment Health* 2016 Feb 09;3(1):e9 [FREE Full text] [doi: [10.2196/mental.4534](https://doi.org/10.2196/mental.4534)] [Medline: [26860537](https://pubmed.ncbi.nlm.nih.gov/26860537/)]
9. van der Vaart R, Witting M, Riper H, Kooistra L, Bohlmeijer E, van Gemert-Pijnen LJ. Blending online therapy into regular face-to-face therapy for depression: content, ratio and preconditions according to patients and therapists using a Delphi study. *BMC Psychiatry* 2014 Dec 14;14:355 [FREE Full text] [doi: [10.1186/s12888-014-0355-z](https://doi.org/10.1186/s12888-014-0355-z)] [Medline: [25496393](https://pubmed.ncbi.nlm.nih.gov/25496393/)]
10. Gee P, Greenwood D, Paterniti D, Ward D, Miller L. The eHealth Enhanced Chronic Care Model: a theory derivation approach. *J Med Internet Res* 2015 Apr 01;17(4):e86 [FREE Full text] [doi: [10.2196/jmir.4067](https://doi.org/10.2196/jmir.4067)] [Medline: [25842005](https://pubmed.ncbi.nlm.nih.gov/25842005/)]
11. Siminerio L. The role of technology and the chronic care model. *J Diabetes Sci Technol* 2010 Mar 01;4(2):470-475 [FREE Full text] [doi: [10.1177/193229681000400229](https://doi.org/10.1177/193229681000400229)] [Medline: [20307409](https://pubmed.ncbi.nlm.nih.gov/20307409/)]
12. Barak A, Klein B, Proudfoot J. Defining internet-supported therapeutic interventions. *Ann Behav Med* 2009 Aug;38(1):4-17. [doi: [10.1007/s12160-009-9130-7](https://doi.org/10.1007/s12160-009-9130-7)] [Medline: [19787305](https://pubmed.ncbi.nlm.nih.gov/19787305/)]
13. Anderson N, Bulatao R, Cohen B. Critical Perspectives on Racial and Ethnic Differences in Health in Late Life. In: Washington (DC). Washington DC: The National Academies Press; 2004:1-752.

14. Krijgsman J, Peeters J, Burghouts AT. On to added value - eHealth Monitor 2014. TSG 2015;93:58 [FREE Full text] [doi: [10.1007/s12508-015-0025-7](https://doi.org/10.1007/s12508-015-0025-7)]
15. Hoeymans N, Van Oostrom SH, Gijzen R, Schellevis FC. Volksgezondheidszorg.info. Bilthoven: RIVM Selection of diseases URL: <https://www.volksgezondheidszorg.info/selectie-van-ziekten> [accessed 2017-12-01] [WebCite Cache ID [6vNZ0Mjq2](https://www.webcitation.org/6vNZ0Mjq2)]
16. Webb T, Joseph J, Yardley L, Michie S. Using the internet to promote health behavior change: a systematic review and meta-analysis of the impact of theoretical basis, use of behavior change techniques, and mode of delivery on efficacy. J Med Internet Res 2010;12(1):e4 [FREE Full text] [doi: [10.2196/jmir.1376](https://doi.org/10.2196/jmir.1376)] [Medline: [20164043](https://pubmed.ncbi.nlm.nih.gov/20164043/)]
17. Webb TL, Snihotta FF, Michie S. Using theories of behaviour change to inform interventions for addictive behaviours. Addiction 2010 Nov;105(11):1879-1892. [doi: [10.1111/j.1360-0443.2010.03028.x](https://doi.org/10.1111/j.1360-0443.2010.03028.x)] [Medline: [20670346](https://pubmed.ncbi.nlm.nih.gov/20670346/)]
18. The Cochrane Collaboration. 2011. Cochrane handbook for systematic reviews of interventions, version 5 URL: <http://handbook-5-1.cochrane.org/> [accessed 2017-11-30] [WebCite Cache ID [6vMxmweC9](https://www.webcitation.org/6vMxmweC9)]
19. Proper K, Singh A, van Mechelen W, Chinapaw M. Sedentary behaviors and health outcomes among adults: a systematic review of prospective studies. Am J Prev Med 2011 Feb;40(2):174-182. [doi: [10.1016/j.amepre.2010.10.015](https://doi.org/10.1016/j.amepre.2010.10.015)] [Medline: [21238866](https://pubmed.ncbi.nlm.nih.gov/21238866/)]
20. de Boer MJ, Versteegen G, Vermeulen K, Sanderman R, Struys M. A randomized controlled trial of an Internet-based cognitive-behavioural intervention for non-specific chronic pain: an effectiveness and cost-effectiveness study. Eur J Pain 2014 Nov;18(10):1440-1451. [doi: [10.1002/ejp.509](https://doi.org/10.1002/ejp.509)] [Medline: [24777973](https://pubmed.ncbi.nlm.nih.gov/24777973/)]
21. Nordin C, Michaelson P, Gard G, Eriksson M. Effects of the web behavior change program for activity and multimodal pain rehabilitation: randomized controlled trial. J Med Internet Res 2016 Oct 05;18(10):e265 [FREE Full text] [doi: [10.2196/jmir.5634](https://doi.org/10.2196/jmir.5634)] [Medline: [27707686](https://pubmed.ncbi.nlm.nih.gov/27707686/)]
22. Hunt M, Moshier S, Milonova M. Brief cognitive-behavioral internet therapy for irritable bowel syndrome. Behav Res Ther 2009 Sep;47(9):797-802. [doi: [10.1016/j.brat.2009.05.002](https://doi.org/10.1016/j.brat.2009.05.002)] [Medline: [19570525](https://pubmed.ncbi.nlm.nih.gov/19570525/)]
23. Ljótsson B, Hedman E, Andersson E, Hesser H, Lindfors P, Hursti T, et al. Internet-delivered exposure-based treatment vs. stress management for irritable bowel syndrome: a randomized trial. Am J Gastroenterol 2011 Aug;106(8):1481-1491. [doi: [10.1038/ajg.2011.139](https://doi.org/10.1038/ajg.2011.139)] [Medline: [21537360](https://pubmed.ncbi.nlm.nih.gov/21537360/)]
24. Jasper K, Weise C, Conrad I, Andersson G, Hiller W, Kleinstäuber M. Internet-based guided self-help versus group cognitive behavioral therapy for chronic tinnitus: a randomized controlled trial. Psychother Psychosom 2014;83(4):234-246. [doi: [10.1159/000360705](https://doi.org/10.1159/000360705)] [Medline: [24970708](https://pubmed.ncbi.nlm.nih.gov/24970708/)]
25. Nobis S, Lehr D, Ebert D, Baumeister H, Snoek F, Riper H, et al. Efficacy of a web-based intervention with mobile phone support in treating depressive symptoms in adults with type 1 and type 2 diabetes: a randomized controlled trial. Diabetes Care 2015 May;38(5):776-783. [doi: [10.2337/dc14-1728](https://doi.org/10.2337/dc14-1728)] [Medline: [25710923](https://pubmed.ncbi.nlm.nih.gov/25710923/)]
26. Moss-Morris R, McCrone P, Yardley L, van Kessel K, Wills G, Dennison L. A pilot randomised controlled trial of an Internet-based cognitive behavioural therapy self-management programme (MS Invigor8) for multiple sclerosis fatigue. Behav Res Ther 2012 Jun;50(6):415-421. [doi: [10.1016/j.brat.2012.03.001](https://doi.org/10.1016/j.brat.2012.03.001)] [Medline: [22516321](https://pubmed.ncbi.nlm.nih.gov/22516321/)]
27. Ferwerda M, van Beugen S, van Middendorp H, Spillekom-van Koulil S, Donders ART, Visser H, et al. A tailored-guided internet-based cognitive-behavioral intervention for patients with rheumatoid arthritis as an adjunct to standard rheumatological care: results of a randomized controlled trial. Pain 2017 May;158(5):868-878. [doi: [10.1097/j.pain.0000000000000845](https://doi.org/10.1097/j.pain.0000000000000845)] [Medline: [28106666](https://pubmed.ncbi.nlm.nih.gov/28106666/)]
28. Friesen L, Hadjistavropoulos H, Schneider L, Alberts N, Titov N, Dear B. Examination of an internet-delivered cognitive behavioural pain management course for adults with fibromyalgia: a randomized controlled trial. Pain 2016 Dec 15:1-1 Epub ahead of print(forthcoming). [doi: [10.1097/j.pain.0000000000000802](https://doi.org/10.1097/j.pain.0000000000000802)] [Medline: [27984490](https://pubmed.ncbi.nlm.nih.gov/27984490/)]
29. van Beugen S, Ferwerda M, Spillekom-van Koulil S, Smit JV, Zeeuwen-Franssen ME, Kroft EB, et al. Tailored therapist-guided internet-based cognitive behavioral treatment for psoriasis: a randomized controlled trial. Psychother Psychosom 2016;85(5):297-307 [FREE Full text] [doi: [10.1159/000447267](https://doi.org/10.1159/000447267)] [Medline: [27508937](https://pubmed.ncbi.nlm.nih.gov/27508937/)]
30. Steel J, Geller D, Kim K, Butterfield LH, Spring M, Grady J, et al. Web-based collaborative care intervention to manage cancer-related symptoms in the palliative care setting. Cancer 2016 Apr 15;122(8):1270-1282 [FREE Full text] [doi: [10.1002/cncr.29906](https://doi.org/10.1002/cncr.29906)] [Medline: [26970434](https://pubmed.ncbi.nlm.nih.gov/26970434/)]
31. Allen JK, Stephens J, Dennison Himmelfarb CR, Stewart KJ, Hauck S. Randomized controlled pilot study testing use of smartphone technology for obesity treatment. J Obes 2013;2013:151597. [doi: [10.1155/2013/151597](https://doi.org/10.1155/2013/151597)]
32. Yardley L, Ware L, Smith E, Williams S, Bradbury KJ, Arden-Close EJ, et al. Randomised controlled feasibility trial of a web-based weight management intervention with nurse support for obese patients in primary care. Int J Behav Nutr Phys Act 2014 May 21;11:67 [FREE Full text] [doi: [10.1186/1479-5868-11-67](https://doi.org/10.1186/1479-5868-11-67)] [Medline: [24886516](https://pubmed.ncbi.nlm.nih.gov/24886516/)]
33. Glasgow R, Kurz D, King D, Dickman JM, Faber AJ, Halterman E, et al. Outcomes of minimal and moderate support versions of an internet-based diabetes self-management support program. J Gen Intern Med 2010 Dec;25(12):1315-1322 [FREE Full text] [doi: [10.1007/s11606-010-1480-0](https://doi.org/10.1007/s11606-010-1480-0)] [Medline: [20714820](https://pubmed.ncbi.nlm.nih.gov/20714820/)]
34. van der Weegen S, Verwey R, Spreeuwenberg M, Tange H, van der Weijden T, de Witte L. It's LiFe! Mobile and web-based monitoring and feedback tool embedded in primary care increases physical activity: a cluster randomized controlled trial. J Med Internet Res 2015 Jul 24;17(7):e184 [FREE Full text] [doi: [10.2196/jmir.4579](https://doi.org/10.2196/jmir.4579)] [Medline: [26209025](https://pubmed.ncbi.nlm.nih.gov/26209025/)]

35. Dlugonski D, Motl R, Mohr D, Sandroff B. Internet-delivered behavioral intervention to increase physical activity in persons with multiple sclerosis: sustainability and secondary outcomes. *Psychol Health Med* 2012;17(6):636-651. [doi: [10.1080/13548506.2011.652640](https://doi.org/10.1080/13548506.2011.652640)] [Medline: [22313192](https://pubmed.ncbi.nlm.nih.gov/22313192/)]
36. Klaren R, Hubbard E, Motl R. Efficacy of a behavioral intervention for reducing sedentary behavior in persons with multiple sclerosis: a pilot examination. *Am J Prev Med* 2014 Nov;47(5):613-616. [doi: [10.1016/j.amepre.2014.05.036](https://doi.org/10.1016/j.amepre.2014.05.036)] [Medline: [25070271](https://pubmed.ncbi.nlm.nih.gov/25070271/)]
37. van den Berg MH, Ronday H, Peeters A, le Cessie S, van der Giesen FJ, Breedveld FC, et al. Using internet technology to deliver a home-based physical activity intervention for patients with rheumatoid arthritis: A randomized controlled trial. *Arthritis Rheum* 2006 Dec 15;55(6):935-945 [FREE Full text] [doi: [10.1002/art.22339](https://doi.org/10.1002/art.22339)] [Medline: [17139640](https://pubmed.ncbi.nlm.nih.gov/17139640/)]
38. van der Meer V, Bakker M, van den Hout Wilbert B, Rabe KF, Sterk PJ, Kievit J, SMASHING (Self-Management in Asthma Supported by Hospitals, ICT, Nurses and General Practitioners) Study Group. Internet-based self-management plus education compared with usual care in asthma: a randomized trial. *Ann Intern Med* 2009 Jul 21;151(2):110-120. [Medline: [19620163](https://pubmed.ncbi.nlm.nih.gov/19620163/)]
39. Bennett G, Herring S, Puleo E, Stein E, Emmons K, Gillman M. Web-based weight loss in primary care: a randomized controlled trial. *Obesity (Silver Spring)* 2010 Feb;18(2):308-313 [FREE Full text] [doi: [10.1038/oby.2009.242](https://doi.org/10.1038/oby.2009.242)] [Medline: [19696764](https://pubmed.ncbi.nlm.nih.gov/19696764/)]
40. Buhrman M, Fältenhag S, Ström L, Andersson G. Controlled trial of Internet-based treatment with telephone support for chronic back pain. *Pain* 2004 Oct;111(3):368-377. [doi: [10.1016/j.pain.2004.07.021](https://doi.org/10.1016/j.pain.2004.07.021)] [Medline: [15363881](https://pubmed.ncbi.nlm.nih.gov/15363881/)]
41. Buhrman M, Nilsson-Ihrfeldt E, Jannert M, Ström L, Andersson G. Guided internet-based cognitive behavioural treatment for chronic back pain reduces pain catastrophizing: a randomized controlled trial. *J Rehabil Med* 2011 May;43(6):500-505 [FREE Full text] [doi: [10.2340/16501977-0805](https://doi.org/10.2340/16501977-0805)] [Medline: [21533329](https://pubmed.ncbi.nlm.nih.gov/21533329/)]
42. Buhrman M, Fredriksson A, Edström G, Shafiei D, Tärnqvist C, Ljótsson B, et al. Guided Internet-delivered cognitive behavioural therapy for chronic pain patients who have residual symptoms after rehabilitation treatment: randomized controlled trial. *Eur J Pain* 2013 May;17(5):753-765. [doi: [10.1002/j.1532-2149.2012.00244.x](https://doi.org/10.1002/j.1532-2149.2012.00244.x)] [Medline: [23139021](https://pubmed.ncbi.nlm.nih.gov/23139021/)]
43. Buhrman M, Syk M, Burvall O, Hartig T, Gordh T, Andersson G. Individualized guided internet-delivered Cognitive-Behavior Therapy for chronic pain patients with comorbid depression and anxiety: a randomized controlled trial. *Clin J Pain* 2015 Jun;31(6):504-516. [doi: [10.1097/AJP.0000000000000176](https://doi.org/10.1097/AJP.0000000000000176)] [Medline: [25380222](https://pubmed.ncbi.nlm.nih.gov/25380222/)]
44. Dear B, Gandy M, Karin E, Staples LG, Johnston L, Fogliati VJ, et al. The Pain Course: a randomised controlled trial examining an internet-delivered pain management program when provided with different levels of clinician support. *Pain* 2015 Oct;156(10):1920-1935 [FREE Full text] [doi: [10.1097/j.pain.0000000000000251](https://doi.org/10.1097/j.pain.0000000000000251)] [Medline: [26039902](https://pubmed.ncbi.nlm.nih.gov/26039902/)]
45. Liebreich T, Plotnikoff R, Courneya K, Boulé N. Diabetes NetPLAY: A physical activity website and linked email counselling randomized intervention for individuals with type 2 diabetes. *Int J Behav Nutr Phys Act* 2009 Mar 27;6:18 [FREE Full text] [doi: [10.1186/1479-5868-6-18](https://doi.org/10.1186/1479-5868-6-18)] [Medline: [19327141](https://pubmed.ncbi.nlm.nih.gov/19327141/)]
46. McKay H, King D, Eakin E, Seeley J, Glasgow R. The diabetes network internet-based physical activity intervention: a randomized pilot study. *Diabetes Care* 2001 Aug;24(8):1328-1334. [Medline: [11473065](https://pubmed.ncbi.nlm.nih.gov/11473065/)]
47. Torbjørnsen A, Jennum A, Småstuen MC, Arsand E, Holmen H, Wahl AK, et al. A low-intensity mobile health intervention with and without health counseling for persons with type 2 diabetes, part 1: baseline and short-term results from a randomized controlled trial in the Norwegian part of Renewing Health. *JMIR mHealth uHealth* 2014 Dec 11;2(4):e52 [FREE Full text] [doi: [10.2196/mhealth.3535](https://doi.org/10.2196/mhealth.3535)] [Medline: [25499592](https://pubmed.ncbi.nlm.nih.gov/25499592/)]
48. Trompetter H, Bohlmeijer E, Veehof M, Schreurs K. Internet-based guided self-help intervention for chronic pain based on Acceptance and Commitment Therapy: a randomized controlled trial. *J Behav Med* 2015 Feb;38(1):66-80. [doi: [10.1007/s10865-014-9579-0](https://doi.org/10.1007/s10865-014-9579-0)] [Medline: [24923259](https://pubmed.ncbi.nlm.nih.gov/24923259/)]
49. Dear B, Titov N, Perry K, Johnston L, Wootton BM, Terides MD, et al. The Pain Course: a randomised controlled trial of a clinician-guided Internet-delivered cognitive behaviour therapy program for managing chronic pain and emotional well-being. *Pain* 2013 Jun;154(6):942-950. [doi: [10.1016/j.pain.2013.03.005](https://doi.org/10.1016/j.pain.2013.03.005)] [Medline: [23688830](https://pubmed.ncbi.nlm.nih.gov/23688830/)]
50. Cugelman B, Thelwall M, Dawes P. Online interventions for social marketing health behavior change campaigns: a meta-analysis of psychological architectures and adherence factors. *J Med Internet Res* 2011 Feb 14;13(1):e17 [FREE Full text] [doi: [10.2196/jmir.1367](https://doi.org/10.2196/jmir.1367)] [Medline: [21320854](https://pubmed.ncbi.nlm.nih.gov/21320854/)]
51. Kwasnicka D, Dombrowski S, White M, Sniehotta F. Theoretical explanations for maintenance of behaviour change: a systematic review of behaviour theories. *Health Psychol Rev* 2016 Sep;10(3):277-296 [FREE Full text] [doi: [10.1080/17437199.2016.1151372](https://doi.org/10.1080/17437199.2016.1151372)] [Medline: [26854092](https://pubmed.ncbi.nlm.nih.gov/26854092/)]
52. Pisters M, Veenhof C, van Meeteren N, Ostelo RW, de Bakker Dinny H, Schellevis FG, et al. Long-term effectiveness of exercise therapy in patients with osteoarthritis of the hip or knee: a systematic review. *Arthritis Rheum* 2007 Oct 15;57(7):1245-1253 [FREE Full text] [doi: [10.1002/art.23009](https://doi.org/10.1002/art.23009)] [Medline: [17907210](https://pubmed.ncbi.nlm.nih.gov/17907210/)]
53. Cognitive Behavior Therapy, Second Edition: Basics and Beyond. New York: The Guilford Press; 2011.
54. De Vries H, Kloek C, Bossen D, Veenhof C. Physiotherapeutic use of a blended e-health-intervention; why is e-health (not) being used? *FysioPraxis* 2016;25(3):35-37.

55. Elbert N, van Os-Medendorp H, van Renselaar W, Ekeland AG, Hakkaart-van RL, Raat H, et al. Effectiveness and cost-effectiveness of ehealth interventions in somatic diseases: a systematic review of systematic reviews and meta-analyses. *J Med Internet Res* 2014 Apr 16;16(4):e110 [FREE Full text] [doi: [10.2196/jmir.2790](https://doi.org/10.2196/jmir.2790)] [Medline: [24739471](https://pubmed.ncbi.nlm.nih.gov/24739471/)]
56. Jakobsen J, Wetterslev J, Lange T, Gluud C. Viewpoint: taking into account risks of random errors when analysing multiple outcomes in systematic reviews. *Cochrane Database Syst Rev* 2016 Mar 18;3:ED000111. [doi: [10.1002/14651858.ED000111](https://doi.org/10.1002/14651858.ED000111)] [Medline: [27030037](https://pubmed.ncbi.nlm.nih.gov/27030037/)]

Abbreviations

COPD: chronic obstructive pulmonary disease

RCT: randomized controlled trial

Edited by G Eysenbach; submitted 29.05.17; peer-reviewed by H de Vries, R van der Vaart; comments to author 15.08.17; revised version received 18.09.17; accepted 23.09.17; published 21.12.17

Please cite as:

Kloek C, Bossen D, de Bakker DH, Veenhof C, Dekker J

Blended Interventions to Change Behavior in Patients With Chronic Somatic Disorders: Systematic Review

J Med Internet Res 2017;19(12):e418

URL: <http://www.jmir.org/2017/12/e418/>

doi: [10.2196/jmir.8108](https://doi.org/10.2196/jmir.8108)

PMID: [29269338](https://pubmed.ncbi.nlm.nih.gov/29269338/)

©Corelien Kloek, Daniël Bossen, Dinny H de Bakker, Cindy Veenhof, Joost Dekker. Originally published in the Journal of Medical Internet Research (<http://www.jmir.org>), 21.12.2017. This is an open-access article distributed under the terms of the Creative Commons Attribution License (<https://creativecommons.org/licenses/by/4.0/>), which permits unrestricted use, distribution, and reproduction in any medium, provided the original work, first published in the Journal of Medical Internet Research, is properly cited. The complete bibliographic information, a link to the original publication on <http://www.jmir.org/>, as well as this copyright and license information must be included.