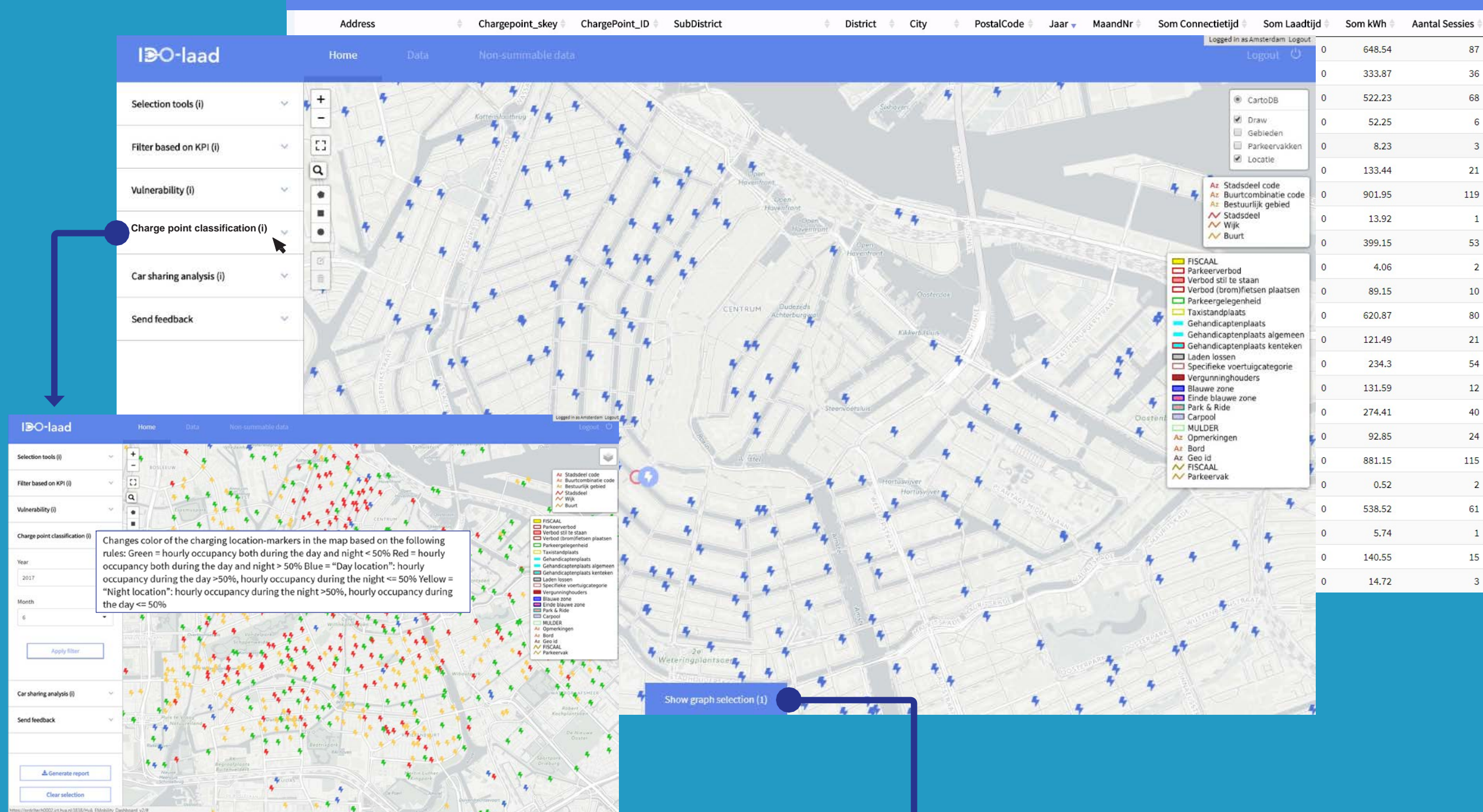


EV Charging performance

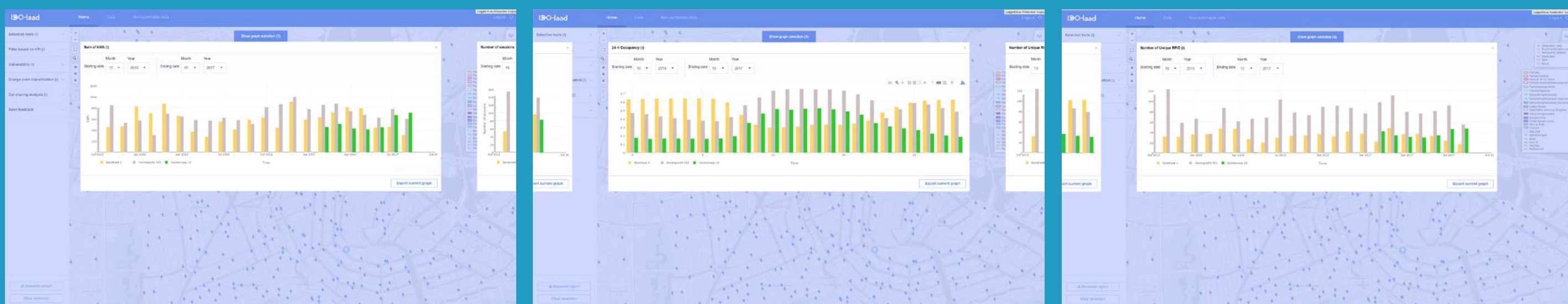
A dashboard to support:

- Demand driven expansion of charging infrastructure
- Detection of charging infrastructure bottlenecks
- Strategic expansion of charging infrastructure



Interactive KPI graphs of selected locations

sum kWh, number of sessions, average occupancy, hourly occupancy, number of unique users



Simone Maase, Amsterdam University of Applied Sciences, The Netherlands
Jurjen Helmus, Amsterdam University of Applied Sciences, The Netherlands

The IDO-laad research project is funded by the Dutch "Regieorgaan SiA", part of the Dutch Organization for Scientific Research (NWO). Charging data of the public charging infrastructure have been provided by the municipalities of Amsterdam, Rotterdam, The Hague, Utrecht and the Metropolitan Region of Amsterdam.



Interested? Download the full paper at www.idolaad.com
or contact Simone Maase: s.j.f.m.maase@hva.nl

#tra2018

